



e.g.:When planting the seedling on the machine, you should choose "Growing" on PUMP CYCLE, and "Grow" on LIGHT CYCLE.;When buds appear, please choose "Flowering" or "Bubblers" (only when using the air pump instead of water pump) on PUMP CYCLE, and "Bloom" on LIGHT CYCLE.

Cloning- always on

Growing- 1 minute on, 5 minutes off (does not change when lights off)

Flowering- 2 minute on, 5 minutes off (does not change when lights off)

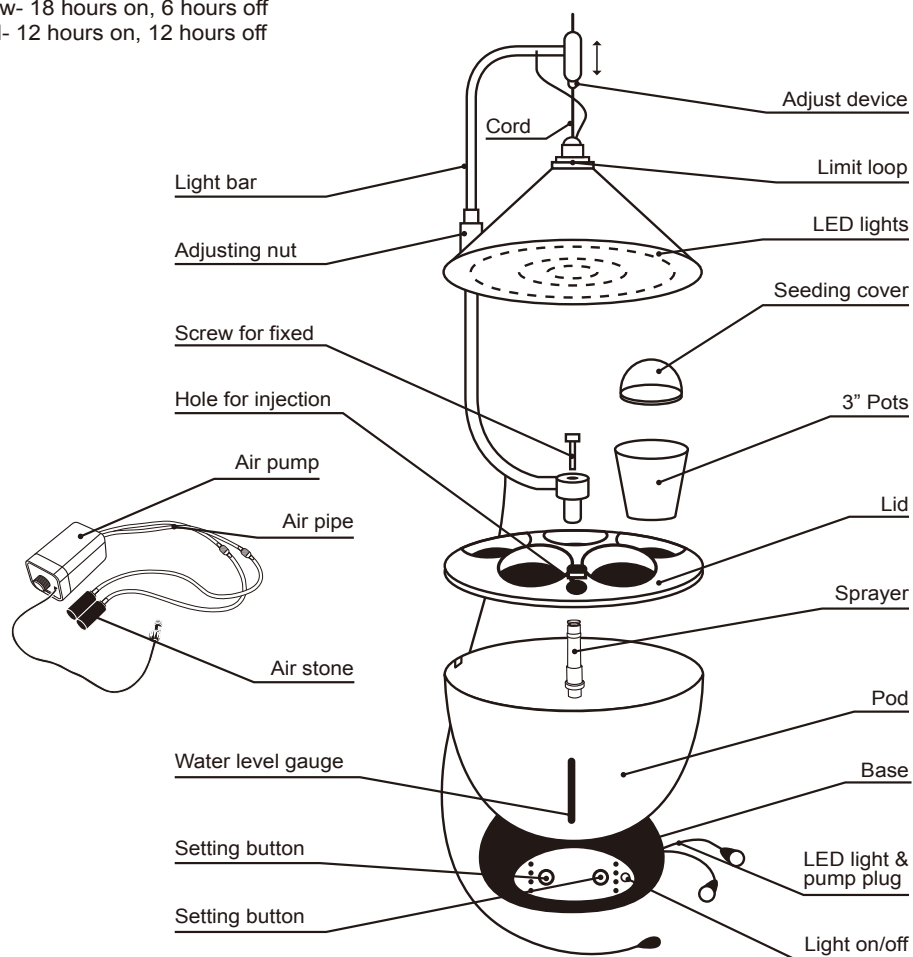
Bubblers- always on (this will be selected when customer replaces water pump with air pump/stone.)

Light Cycle

Clone- 24 hours on

Grow- 18 hours on, 6 hours off

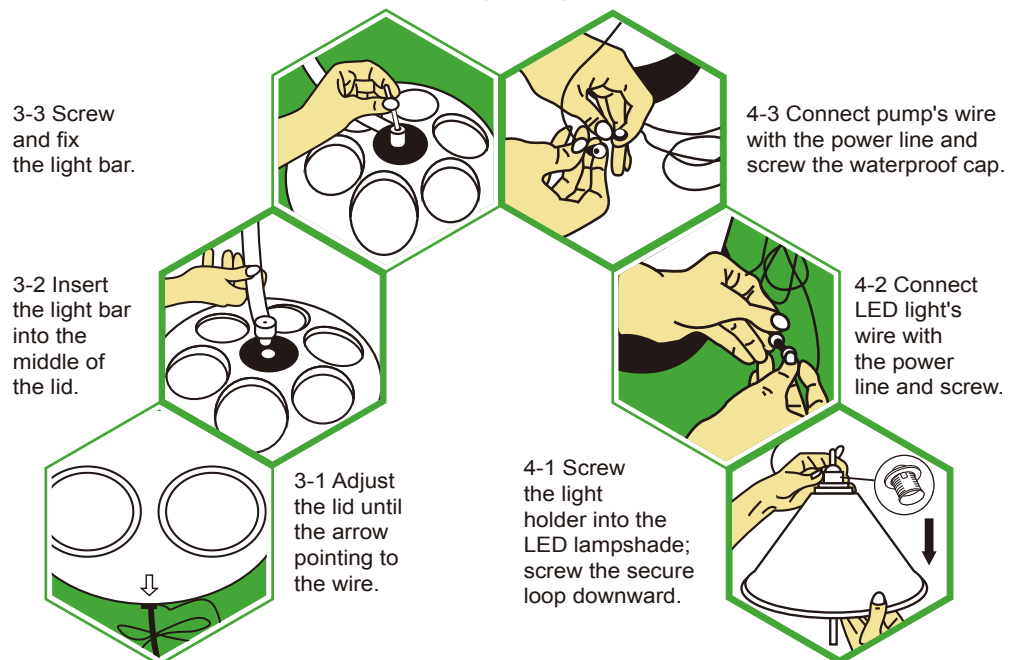
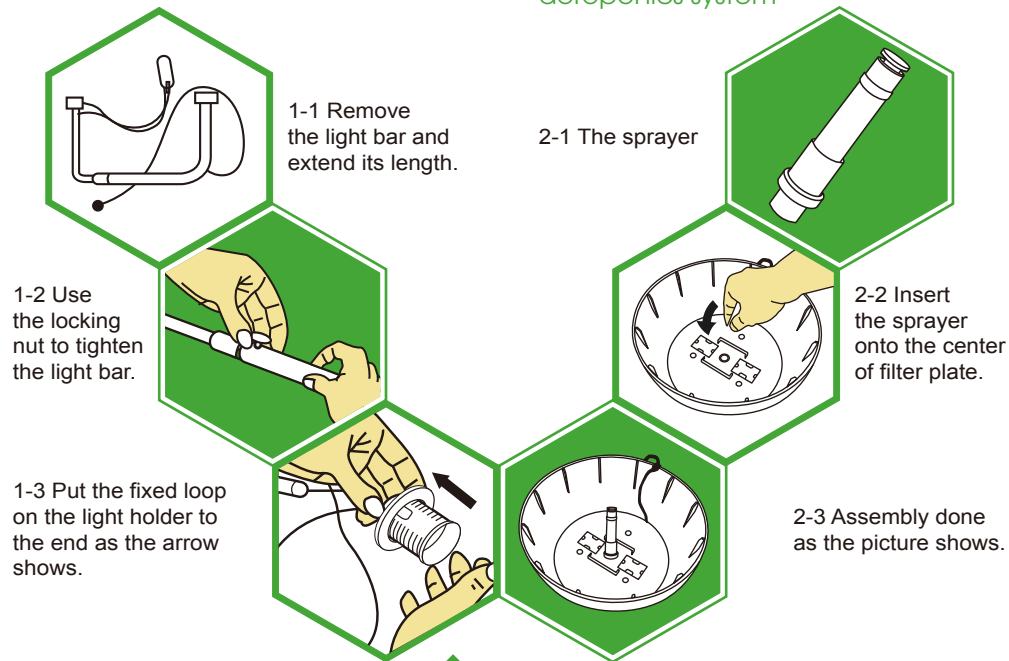
Bud- 12 hours on, 12 hours off



Never touch LED light panel, pull and plug the LED light & pump plug when it's "on" position!



① How to assemble the light bar

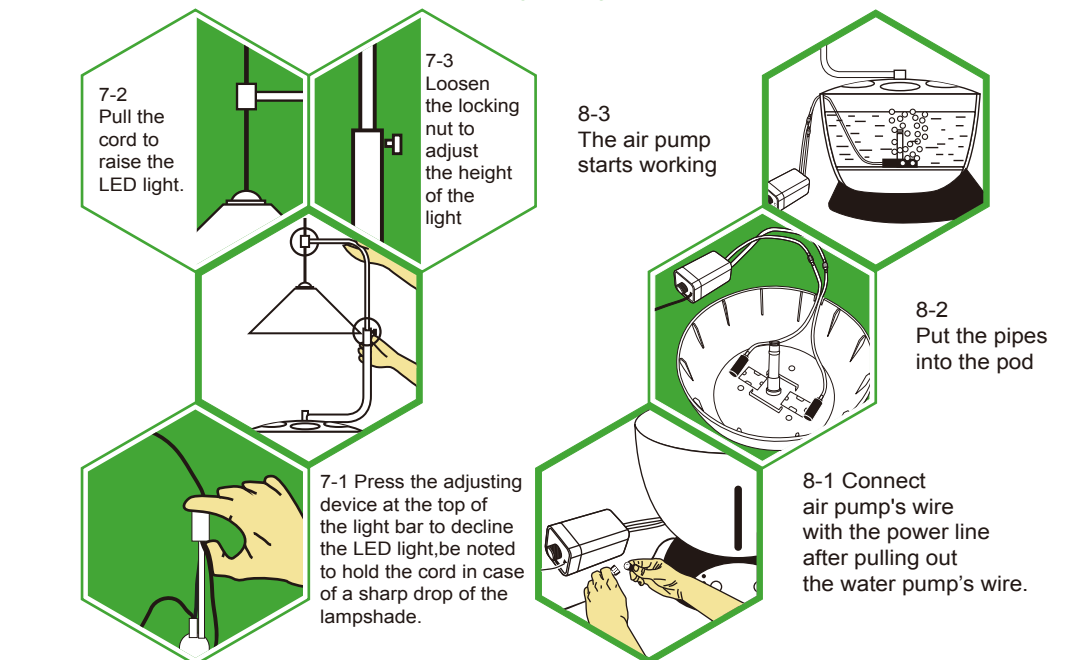
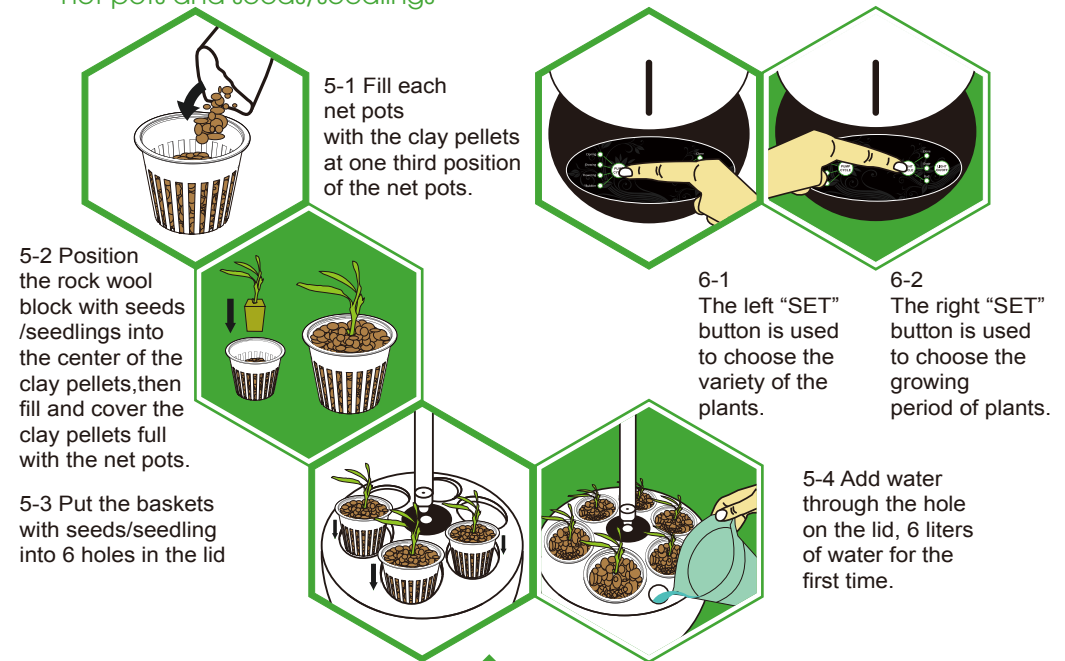


③ How to position the lid and attach the light bar

② How to assemble the aeroponics system

⑤ How to position the clay pellets, net pots and seeds/seedlings

⑥ How to use the control panel



⑦ How to adjust the height of the light

⑧ How to use the air pump