



MODEL: DT1050

# OWNER’S MANUAL

Thank you for purchasing this  
DYNATRAP® Insect Trap!



## IMPORTANT SAFETY INSTRUCTIONS

**WARNING**, When using electric appliances, basic precautions should always be followed, including the following:

- To disconnect, turn all controls to the off (“O”) position, then remove plug from outlet.
  - Unplug from outlet when not in use and before servicing or cleaning.
  - To reduce the risk of electrical shock, do not put appliance in water or other liquid.
  - This appliance is provided with double insulation. Use only identical replacement parts.
  - Connect only to a circuit that is protected by a ground-fault circuit-interrupter (GFCI).
- See instructions for Servicing of Double-Insulated Appliances.

### INSTRUCTIONS FOR DOUBLE-INSULATED, CORD-CONNECTED APPLIANCES:

In a double-insulated appliance, two systems of insulation are provided instead of grounding. No grounding means is provided on a double-insulated appliance, nor should a means for grounding be added to the appliance. Servicing of a double-insulated appliance requires extreme care and knowledge of the system, and should be done only by qualified service personnel. Replacement parts for a double-insulated appliance must be identical to those parts in the appliance.

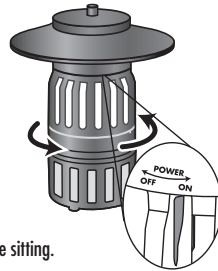
## IMPORTANT SAFETY INSTRUCTIONS

Please read these instructions before using the DynaTrap® Insect Trap and keep for future reference.

1. Always turn unit off and disconnect plug before servicing, cleaning, or changing bulb.
2. Do not position the unit near heat, gas, oil or other flammable materials.
3. Mount product out of reach from children.
4. Never operate this product if it has a damaged cord or plug, if it is not working properly, if it has been dropped or damaged, or if it has been dropped into water.
5. This product is equipped with 2-conductor cord and 2-prong polarized plug as a safety feature. This plug will fit in a polarized outlet only one way. If the plug does not fully fit in the outlet, then reverse the plug. If it still does not fit, then contact a qualified electrician. To reduce the risk of electrical shock, only plug into a properly installed outlet. Do not attempt to defeat this safety feature.
6. Do not insert fingers or any foreign objects into the unit while it is connected to an electrical outlet.
7. Collected insects within the unit may contribute to fire, so clean insects from the unit frequently.
8. Do not clean this product with water spray. Do not place where it can fall into water, or near flammable materials.
9. Do not touch fan while in motion.
10. Do not abuse cord—never carry or hang unit by cord or yank it to disconnect from receptacle. Keep cord away from heat, oil, or sharp edges.
11. Use only extension cords that are clearly marked “Suitable for Use with Outdoor Appliances” and that have plug and receptacles that match the product plug. Replace all damaged cords.

## INSTALLATION & OPERATING INSTRUCTIONS

1. Unpack unit. Save carton for off-season storage (if needed).
2. Plug cord into an outlet or UL listed extension cord as described in “IMPORTANT SAFETY INSTRUCTIONS”.
3. Hold the Power switch on the side of the revolving rotation door. Twist the unit to the “Power ON” position. When you hear a “click”, the machine is turned on. For best catch results leave unit on at all times, except when cleaning or servicing.
4. For best catch results leave unit on at all times, except when cleaning or servicing.
5. Catch rate activity will be higher at night. For best catch results it is recommended to keep the unit away from competing light sources. Intended for household use only.
6. It is recommended to place the unit at least 20 to 40 feet away from where people will be sitting.
7. This unit is all-weather resistant - designed for outdoor use including rainy conditions.



## CLEANING

Frequent cleaning will prolong the life of the unit, ensure fire prevention and provide for more efficient operation.

1. Be sure to clean the unit once per week
2. To clean, hold the switch on the revolving rotation door and turn it to the “POWER OFF” position. After hearing the “click”, the machine is turned off. Unplug the unit.
3. For weekly cleaning, remove the screw securing the retaining cage and then twist the cage clockwise. Remove any buildup from the inside of the retaining cage and fan with a brush (included).
4. For major cleaning, remove the four screws securing the fan housing to the light housing. After removing the screws, gently pull the fan housing away from the light housing. Using a soft brush, remove dirt and debris from the light housing. Once the cleaning process has been completed, align the screw holes in the fan housing with the screw holes in the lighting unit and tighten the screws to the base of the lighting unit.
5. When replacing the retaining cage — DO NOT press/push against the screen windows.

## REPLACING BULB

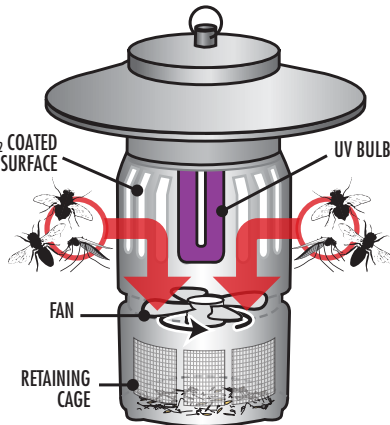
The light bulb life expectancy is approximately 3,000 hours (or about 4 months), and should be replaced regularly to ensure optimal UV effectiveness. Even though the bulb’s light may be visible to you, its ability to attract insects diminishes over time.

1. Turn power switch to “off” position. UNPLUG UNIT, and allow bulb to cool before replacing.
2. Remove the screw securing the retaining cage and then twist the cage clockwise. Turn the unit upside down.
3. Remove the four screws securing the fan housing to the light housing. After removing the screws, gently pull the fan housing away from the light housing. Using a soft brush, remove dirt and debris from the light housing. Once the cleaning process has been completed, untighten the screw securing the base of the light bulb to the light housing. Slide the metal bracket to the side. Cover the bulb with a cloth to protect your finger and hand. Grasp the bulb (with your hand and fingers protected by the cloth) and gently pull the bulb from the socket.
4. Remove any debris from the lamp socket with a brush before inserting the new bulb. Replace the metal plate over the base of the bulb and tighten the retaining screw.
5. Align the screw holes in the fan housing with the screw holes in the lighting unit and tighten the screws to the base of the lighting unit.
6. Replace the retaining cage at the bottom of the unit.

Replacement fluorescent bulbs can be found at your local retailer or can be ordered directly from DynaTrap by calling 1-877-403-TRAP (8727) or visiting [www.dynatrap.com](http://www.dynatrap.com)

## HOW THE DYNATRAP® INSECT TRAP WORKS

Flying insects are attracted to the unit by the UV light and CO<sub>2</sub> that is generated by the photo-catalysis between the UV lamps and the special TiO<sub>2</sub> coating. The fan then pulls the insects into the screened base, trapping them until they dehydrate and die. The base can be removed, allowing the contents to be periodically emptied into the trash. The see-through screen shows the insects trapped in the compartment, alerting you when the cage needs to be emptied.



## TROUBLESHOOTING

Problem:	Possible cause:	Correction:
Bulbs do not illuminate and fan does not spin.	1. No electrical power	1. Check plug and receptacle and fuse or circuit breaker. 2. Check to make sure power is switched to the “ON” position.
Bulb illuminates, but fan does not spin.	1. Shorted fan	1. UNPLUG UNIT: Examine fan to see that it is free from foreign material, dirt or build-up of dead insects. Clean unit as in “CLEANING” section.
Fan spins, but bulb does not illuminate	1. Bulb not seated properly 2. Burnt out bulb	1. Check all sockets for proper bulb seating and alignment. 2. Replace bulb if needed following instructions under “Replacing Bulbs”.

## LIMITED WARRANTY

**DYNAMIC warranties to the original purchaser that this product is free from defective materials and workmanship. This warranty is limited to remedy any defective part for a period of one year from date of original date of purchase. Retain your original receipt as proof of purchase. This warranty does not apply to the light bulb, nor to, in our judgment, misuse or abuse. If this unit has been altered, no warranty is in force. This warranty does not apply if this unit is purchased outside the United States, Canada and Mexico. In no case shall DYNAMIC be liable for any accidental, punitive, consequential, or any other damages of any kind for breach of this or any other warranty, expressed or implied, whatsoever. Some states do not allow limitation on how long an implied warranty lasts, so the above limitation or exclusion may not apply to you. This warranty gives you specific legal rights, and you may also have other rights that vary from state to state.**

## PARTS & ACCESSORIES AVAILABLE

PART	DESCRIPTION
41050	7-Watt Replacement Fluorescent Bulb (1 piece)
41052	Fan Blade and DC Motor Ultra-Long Life Replacement
41053-DT1050	Retaining Cage
41061	Large Capacity Net (to be used instead of the Retaining Cage, suitable for extra large catch performance)



**Dynamic Solutions Worldwide, LLC**

12247 W. Fairview Ave. Milwaukee, WI 53226

Phone: 414-431-2819

Toll free: 1-877-403-TRAP (8727)

Toll free fax: 877-403-3293

Email: [dynatrapinfo@dsw-llc.com](mailto:dynatrapinfo@dsw-llc.com)

Visit us online at [www.dynatrap.com](http://www.dynatrap.com)

© Dynamic Solutions Worldwide, LLC

# SAVE THESE INSTRUCTIONS

