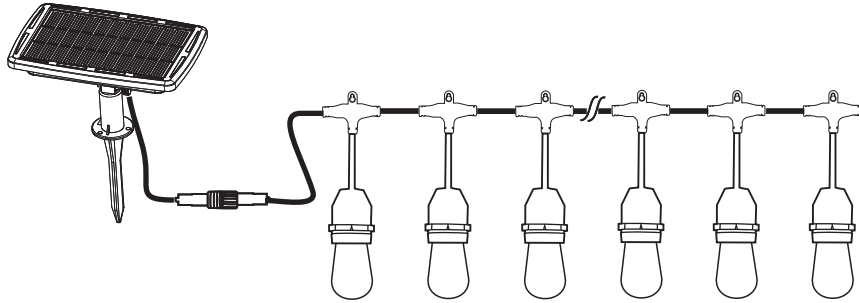


# Minetom<sup>®</sup>

## S14 SOLAR STRING LIGHTS



### IMPORTANT SAFETY INSTRUCTIONS

1. Do not mount or place near gas or electric heaters, fireplace, candles or other similar source installation.
2. Do not secure the wiring of the product with staples or nails, or place on sharp hooks or nails, Install only using the mounting kits provided.
3. Do not let the product rest on the power supply cord or on any electric cord.
4. Do not use this product for other than its intended use.
5. Do not hang other decoration or objects on cord, wire or light string.
6. Do not close doors or window if clamping or damaging the products or cord.
7. Do not cover the product with cloth, paper or any material not part of the product when in use.
8. Read and follow all instructions on this products.

**⚠ WARNING:** This product can expose you to chemicals including lead, which is known to the State of California to cause cancer and birth defects or other reproductive harm, for more information, go to [www.P65Warnings.ca.gov](http://www.P65Warnings.ca.gov).

PLEASE READ THIS MANUAL CAREFULLY AND KEEP IT FOR FUTURE REFERENCE

### INSTALLATION ON WALL

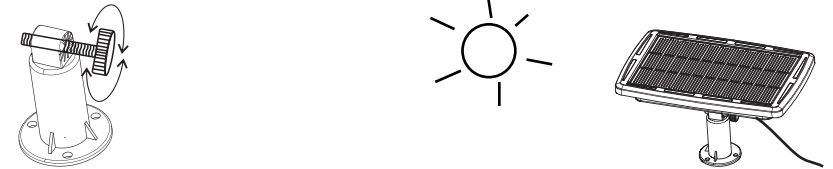
1. Install on brick or concrete wall, mark the installing position, using electric drill to drill three holes. Hammer the plastic plugs into the holes. Using screw driver to drive firmly.



2. Install on wooden wall, using the same way as above but no need to use plastic plugs.

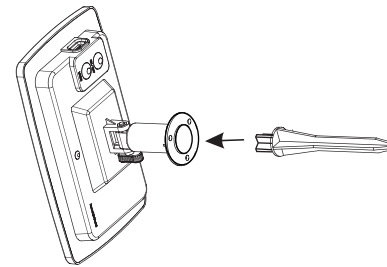


3. Adjust the joint bolt to fix the solar panel direction.

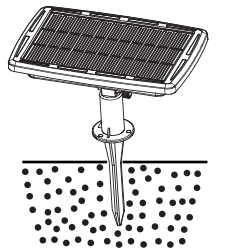


### PLUG IN THE GROUND

1. Insert the stake firmly

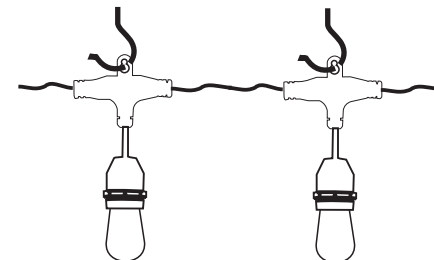


2. Plug in the ground



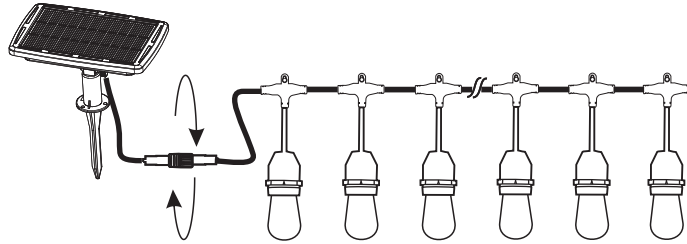
### HANG THE LIGHTS

Hang the string lights on trees, indoors or outdoors with hooks or cable ties.

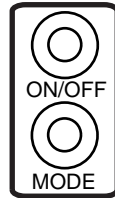


## OPERATIONS

1. Connect the string lights with solar panel.

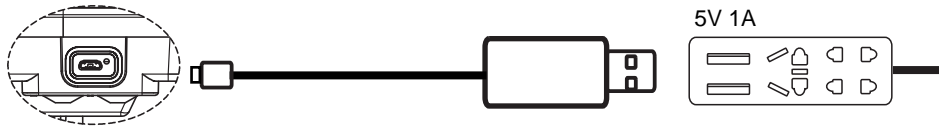


2. Press the ON/OFF button to switch on the panel, press the MODE button repeatedly to set light mode. The string light will be on at dusk and will be off at dawn automatically.



## RECHARGING THROUGH USB PORT

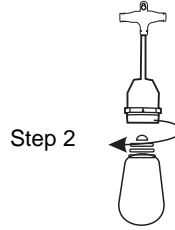
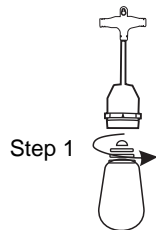
Uncover the micro USB charging port on the side of the panel. Recharge the built-in batteries if the weather is not good, such as in rain or cloudy day. The indicator on panel will turn green when the battery is fully charged.



## BULB REPLACEMENT

Step 1: Screw out the old one from the holder counterclockwise.

Step 2: Screw up a new one properly clockwise.



## TROUBLESHOOTING

1. If the string lights do not work, make sure the solar panel is switched on.
2. If the string lights do not work, make sure the solar panel is not covered by other things.
3. If the string light do not work, recharge the solar panel or place it in the sunlight.
4. The light flashes, do not make the solar panel sensing the bulb light.
5. If the above cases do not work, ask a professional electrician for help or contact us.

## SPECIFICATION

1. Solar panel: 3W/5V(18% efficiency)
2. Built-in battery: 1800mAh/3.7V x 2
3. Charging time: 8H(solar), 4H(USB charger 5V 1A)
4. The string light will be auto on at dusk, and auto off at dawn.

## PACKAGE

String Lights with Solar Panel  
3 x Screws and Plastic Plugs  
User Manual

## 1 Year Limited Warranty

The product is warranted against defects in materials and workmanship under normal use and service for a period of one year from the date of original purchase when delivered to you in new condition in its original container, warranty repair or replacement shall not extend the original warranty period of the product, a dated proof of purchase is required at the time of warranty service, a copy of your dated bill of sale will satisfy this requirement.

This warranty does not cover accessories or consumables, such as light bulbs, as to which there shall be no warranty or replacement.

This limited warranty covers all defects encountered in normal use of the product and does not apply to the following cases:

1. Loss or damage of the product due to abuse, neglect, mishandling, improper packaging, alteration, accident, electrical current fluctuation, improper use, failure to follow operating or maintenance instructions prescribed in Brighttown safety instructions or other documentation, dropping, scratches and abrasion will be presumed to generate from misuse, abuse or failure to operate as set forth in the user's manual or other documentation for the product.
2. Use of other parts or supplies(other than those sold by Brighttown) that cause damage to the product
3. If the product's model number or dating defaced, altered or removed

For a quick customer service, contact us here

✉ support@brighttown.com 🌐 www.brighttown.com

📘 facebook.com/Brighttown 📞 US +1 (888) 928 8289  
Mon-Fri 8AM-10PM(EST)

Brand family: Brighttown, Minetom