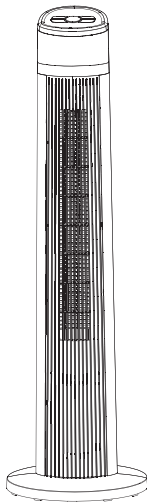


amazonbasics



Oscillating Tower Fan - 42-Inch, 8 Speeds

Ventilador de Torre Oscilante - 107 cm (42 Pulgadas), 8 Velocidades

Ventilateur Tour Oscillant - 107 cm (42 po), 8 Vitesses

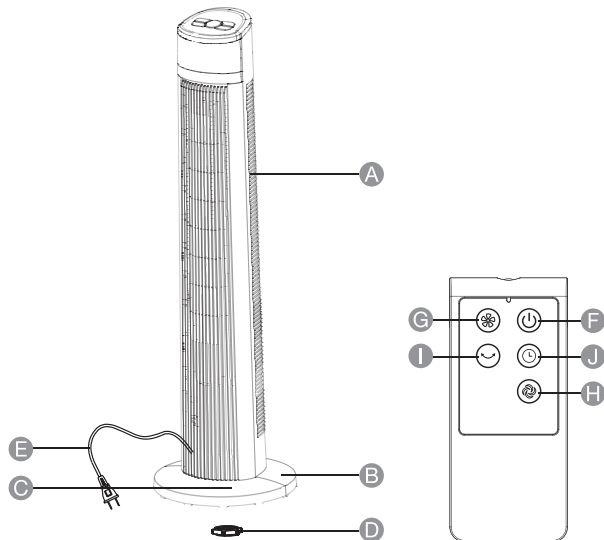
B07BDXKB87

■	English	3
---	---------------	---

Welcome Guide • English

Contents:

Before getting started, ensure the package contains the following components:



A Body

B Rear base

C Front base

D Plastic nut

E Power cord

F On/Off key

G Speed key

H Mode key

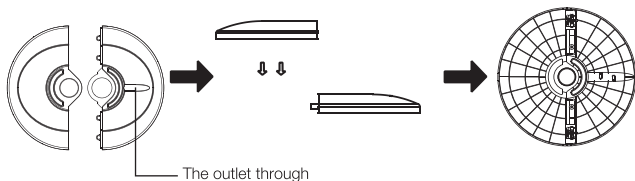
I Osc key

J Timing key

Assembly

Step 1:

Fig. 1



- Take out the fan body and the spare parts from the box. Put the front base onto rear base and join them together (See Fig. 1).
- Unscrew the plastic nut from the fan body.

Step 2:

Fig. 2

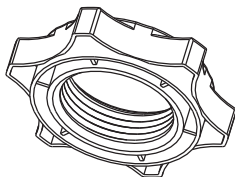
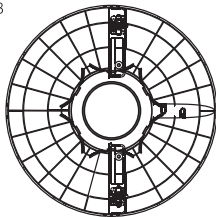


Fig. 3



- Fix the fan body on the base with the plastic nut (See Fig. 2).
- Pass the power cord through the cord opening, then insert the fan body into the base (See Fig. 3).

Operation

I. Remote Control (Fig. 4)

a. Key instruction

1. “” ON/OFF KEY

The “ON” key is for switching on the fan. The fan will be started at breeze step.

Press the “OFF” key if the fan needs to switch off.

2. “” SPEED KEY

Once the fan is on, press this button repeatedly to toggle between the 3 speed modes.

3. “” MODE KEY

Press this button to toggle between the airflow modes.

Mode	Description
Normal	Constant airflow at the currently selected speed.
Natural	The product cycles through different speed modes to provide a natural breeze airflow.
Sleep	Constant soft airflow.

4. “” OSC KEY

After the fan has started, press this key to select oscillation mode. The lights on the display can indicate fan oscillation mode.

5. “” TIMING KEY

To turn on the timer, press this button. To set the amount of hours, press the timer button repeatedly. The timer toggles in one hour increments from 1 to 7 hours.

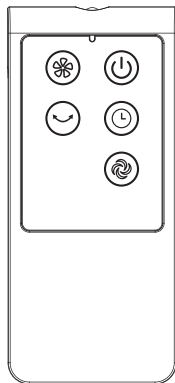
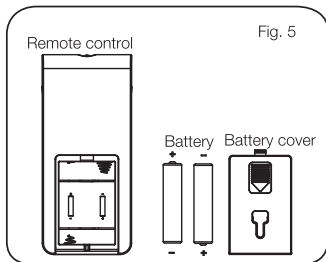


Fig. 4

b. Batteries**(Battery not included in the packaging)**

1. Slide the battery compartment cover.
2. Insert the batteries, and make sure that the batteries are placed as shown in the Fig. 5.
3. Slide back the battery cover.
4. Use size "AAA" manganese or alkaline batteries. Do not use rechargeable batteries.

**c. Battery warning**

1. Do not dispose of batteries in fire, batteries may explode or leak.
2. Do not mix old and new batteries.
3. Do not mix alkaline, standard (carbon-zinc) or rechargeable (nickel-cadmium) batteries.

d. Remote control operation

Point the remote control at the receptor on body of the fan and press the desired button. The remote control will work at distances of up to roughly five meters and the angle of 30 degree included between right and left from the receptor.

The batteries must be removed from the remote control before it is scrapped and that they are disposed of safely.

e. Overheat protection of the motor

The product is equipped with the thermal-fuse. The fuse switches the fan off automatically in case of overheating.

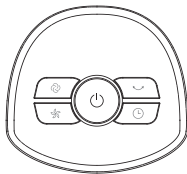
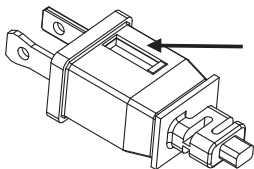
II. Buttons on fan body / Panel indication (Fig. 6)

Fig. 6

The buttons on the body such as ON/OFF, SPEED, MODE, TIMER, OSCILLATION have the same functions as those of the corresponding keys on the remote control.

User Servicing Instructions

- Grab plug and remove it from the outlet or other outlet device. Do not unplug by pulling on cord.
- Open fuse cover. Slide open fuse access cover on top of attachment plug towards blades.
- Remove fuse carefully. Push the fuse from the other side or turn fuseholder over to remove fuse.
- To reduce risk of fire, replace fuse only with 2.5 Amp, 125 Volt fuse.
- Slide the fuse access cover on top of the attachment plug to close fuse cover.
- To reduce risk of fire, do not replace attachment plug. The plug contains a safety device (fuse) that should not be removed. Discard product if the attachment plug is damaged.



Notice:

- When you replace the fuse, please don't operate suddenly or overexert, or else the product will be damage or cause accident.
- When you feel it hard to be operated, please make sure you have got the right way.

Cleaning and Maintenance

- Be sure to unplug from the electrical supply source before cleaning.
- Plastic parts should be cleaned with mild soap and a damp cloth or sponge.
- Thoroughly to remove soap film with clean water.
- Be sure not to make water or other liquid enter inside of motor.

Specifications

Voltage/frequency:	120 V~, 60 Hz
Power consumption:	35 W
Dimensions (W x H x D):	approx. 11.77 x 11.77 x 40.67 inch (29.9 x 29.9 x 103.3 mm)
Net weight:	9.48 lbs (4.3 kg)

Warranty Information

To obtain a copy of the warranty for this product:



Visit amazon.com/AmazonBasics/Warranty

— or —



Contact Customer Service at 1-866-216-1072

Feedback

Love it? Hate it?

Let us know with a customer review.

AmazonBasics is committed to delivering customer-driven products that live up to your high standards. We encourage you to write a review sharing your experiences with the product.

Please visit: amazon.com/review/review-your-purchases#



For further services:



Visit amazon.com/gp/help/customer/contact-us

— or —



Contact Customer Service at 1-866-216-1072

amazonbasics

amazon.com/AmazonBasics

MADE IN CHINA