

EYE-VAC FAQ



My Eye-Vac Won't Function

- Plug in firmly.
- Turn the function dial to AUTO or MAN.
- Re-attach the Pre-Motor Filter to the Collection Bin Lid and make sure they line up *evenly*.
- Empty the Collection Bin.
- Check to make sure the dirt inlet is not blocked.
- Clear any large debris that may not fit through the dirt inlet.

My Eye-Vac Runs Continuously

- Take a wet Q-Tip and gently clean the infrared sensors on either side of the dirt inlet as there may be debris stuck to the sensors creating the sensation that you are still sweeping.
- Email via the Contact tab or dial 1-800-313-5470 for troubleshooting or warranty claims.

DO NOT USE CHEMICALS OR HARSH ABRASIVES TO CLEAN THE SENSORS.

The Suction is Not Strong

- Filters may be dirty. See section "CLEANING EYE-VAC FILTERS".

The Status Indicator Light Is On

- The Eye-Vac ran longer than 5 seconds and is programmed to shut itself off to avoid damage to the motor.
- Turn the function dial to OFF and then reset to AUTO or MAN.

The Collection Bin Indicator Light Is On

- The Collection Bin is full.
- Empty and clean the bin per the section "CLEANING THE COLLECTION BIN."

Cleaning Eye-Vac Filters

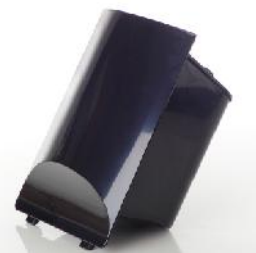
- Set the function dial to OFF.
- Slide the Exhaust Filter up and out of its housing on the side of the unit.
- Tap Filter gently against trash container to loosen and eliminate excess dirt and debris.
- To clean the Exhaust Filter, wash in mild soap and water; rinse and dry thoroughly before using the unit.
- Slide the Holder back into the unit with the Filter facing outwards.



- To clean the Pre-Motor Filter, remove it from the lid of the collection bin.
- Using a soft bristled brush remove excess dirt and debris.
- Wet the brush and apply mild soap to the bristles. Continue to brush away the debris with soapy water until clean.
- Rinse your brush and the filter.
- Do not soak in water.
- If a new filter is needed, replacement filters are available through the Buy Now tab.

NEVER OPERATE YOUR EYE-VAC PROFESSIONAL WITHOUT THE EXHAUST AND PRE-MOTOR FILTER PROPERLY IN PLACE.

Cleaning The Collection Bin



- The Collection Bin should be washed periodically.
- Wash the bin in warm water using a mild soap. Avoid harsh or abrasive cleaners or sponges. Rinse thoroughly.
- Let it air dry. Make sure the Collection Bin is completely dry before inserting it back into the unit.

TO AVOID DAMAGE, DO NOT PLACE COLLECTION BIN IN THE DISHWASHER.

Servicing The Eye-Vac

Other than cleaning the filters as described in the Owner's Manual, this item is not user serviceable. There are no user serviceable parts inside the unit. Email via the Contact tab or dial 1-800-313-5470 for troubleshooting or warranty claims.

Storing The Eye-Vac

- Unplug unit and clean all filters and collection bin before storing.
- Store indoors, in a clean, dry place.
- Never store Eye-Vac while it is still plugged in.
- Never wrap cord tightly around the appliance, use the Cord Storage area on the back of the unit. Do not put any stress on the cord where it enters the unit, as it could cause the cord to wear and break.

WARNING! TO REDUCE THE RISK OF ELECTRIC SHOCK, DO NOT USE OUTDOORS OR ON WET SURFACES.