



Preparation before Programming

1. Computer System Requirements

Operating System: Windows 98, Windows Me. Windows XP, Windows 7, Windows 8 and Windows 10

Hard Disk Space: at least 50MB of available

The minimum memory: 64M

2. Programming Cable

A. USB programming cable - The driver needs to be installed before writing any frequencies.

https://baofeng-uv-5rex.s3.amazonaws.com/Engilsh-UV-5R%20EX%20Programming%20Guideline_201809.zip

- 1) Find the corresponding driver of the system
- 2) Click install and wait for the installation succeed.

B. If you are using a serial cable, it does not need to be installed with a driver. You can just plug in and use directly.

3. Software Download & Install

- 1) Turn on computer, check if your computer system meets the requirements.
- 2) Download the programming software on radioddity.com

https://baofeng-uv-5rex.s3.amazonaws.com/Engilsh-UV-5R%20EX%20Programming%20Guideline_201809.zip

- 3) Install the programming software

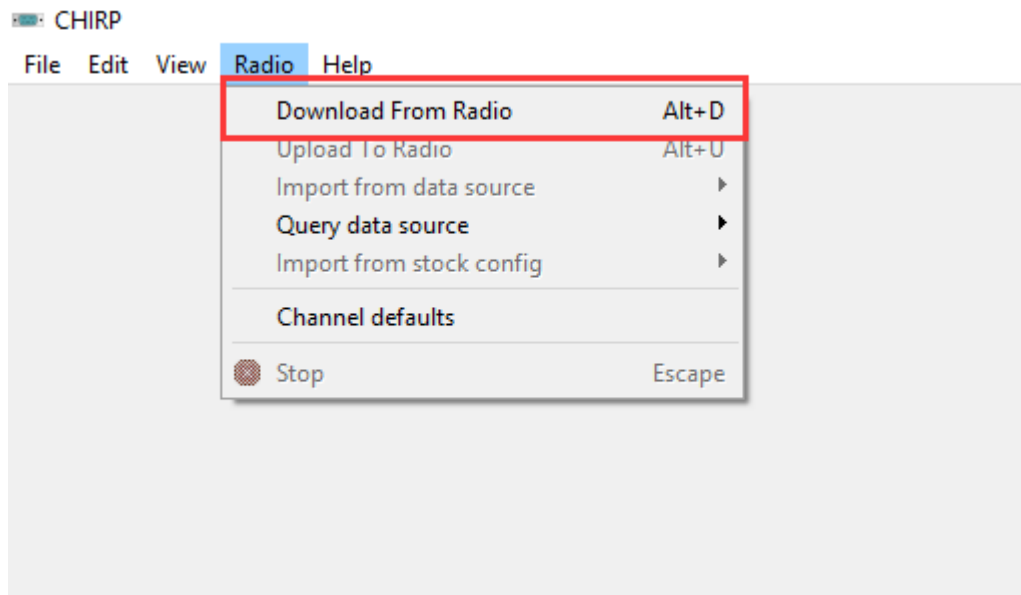
4. Connect your Walkie Talkie with Computer

- 1) USB (or serial) programming cable connects with the computer end.
- 2) Connect the other end of the cable with your walkie talkie.
- 3) When the both ends have been connected, turn on your radio. Make sure it has enough power during the programming procedure.

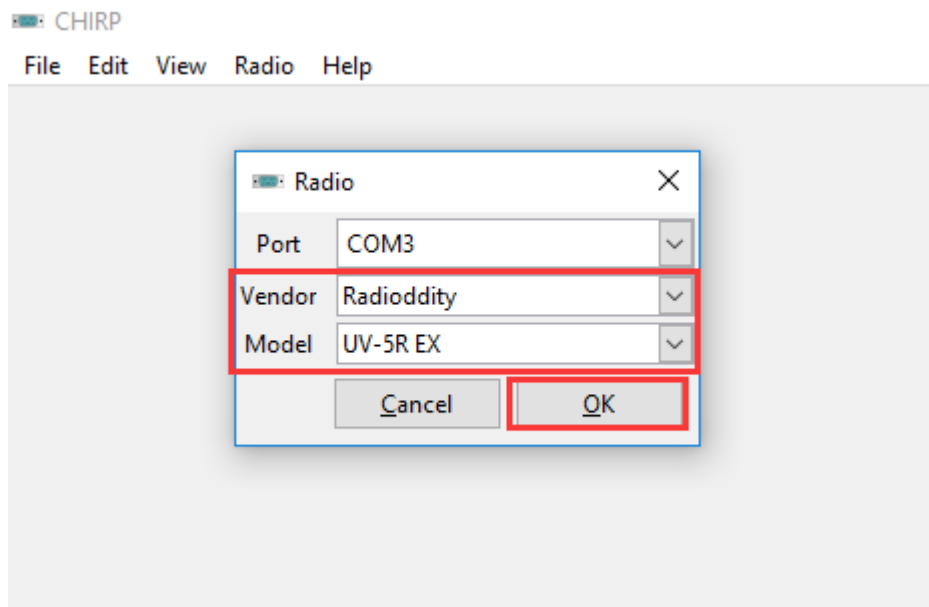


UV-5R EX Chirp Software Programming Process

- 1) Open the CHIRP software (Newest Version), click "Download From radio" under "Radio"



- 2) Select the corresponding cable driver port, and select Model "UV-5R EX" under Vendor "Radioddity", then click "OK" to read the radio.





- 3) And you will come to the page of Memories, in which you can adjust the limited parameters (Channel, TX Frequency, RX Frequency, CTCSS/DCS, High/Low Power, and Wide/Narrow Band, etc).

CHIRP

File Edit View Radio Help

Radioddity UV-5R EX: (Untitled)*

Memories Memory Range: 0 - 127 Refresh Special Channels Show Empty Properties

Settings	Loc	Frequency	Name	Tone Mode	Tone	ToneSql	DTCS Code	DTCS Rx Code	DTCS Pol	Cross Mode	Duplex	Offset	Mode	Power	Skip
	0	0.000000		(None)							(None)		FM		
	1	136.000000		TSQ	69.3						(None)		NFM	Low	
	2	144.450000		(None)							+	5.550000	FM	Low	S
	3	420.000000		TSQ	146.2						(None)		FM	High	
	4	519.955000		(None)							(None)		FM	High	
	5	456.525000		(None)							(None)		FM	High	
	6	457.625000		TSQ	241.8						(None)		FM	High	
	7	458.725000		DTCS			025		NN		(None)		FM	High	
	8	459.825000		DTCS			134		NN		(None)		FM	High	
	9	461.925000		DTCS			274		NN		(None)		FM	High	
	10	462.225000		DTCS			346		NN		(None)		FM	High	
	11	463.325000		DTCS			503		NN		(None)		FM	High	
	12	464.425000		DTCS			073		RR		(None)		FM	High	
	13	465.525000		DTCS			703		RR		(None)		FM	High	
	14	402.225000		(None)							(None)		FM	High	
	15	437.425000		(None)							(None)		FM	High	
	16	479.975000		(None)							(None)		FM	High	
	17	138.550000		(None)							(None)		FM	High	
	18	157.650000		(None)							(None)		FM	High	

- 4) Then if you switch to the page of Settings, you can adjust the limited parameters (VOX Function, Squelch, Backlit, DTMF, FM Radio, Voice Prompt, Scanning, VFO Mode, etc).

CHIRP

File Edit View Radio Help

Radioddity UV-5R EX: (Untitled)*

Memories Settings

Basic Settings

Advanced Settings

Other Settings

Work Mode Settings

FM Radio Preset

DTMF Settings

Service Settings

Carrier Squelch Level: 2

Battery Saver: 1:3

Backlight Timeout: 5

Beep: ☒ Enabled

Timeout Timer: 60 sec

Display Mode (A): Frequency

Display Mode (B): Frequency

Standby LED Color: Purple

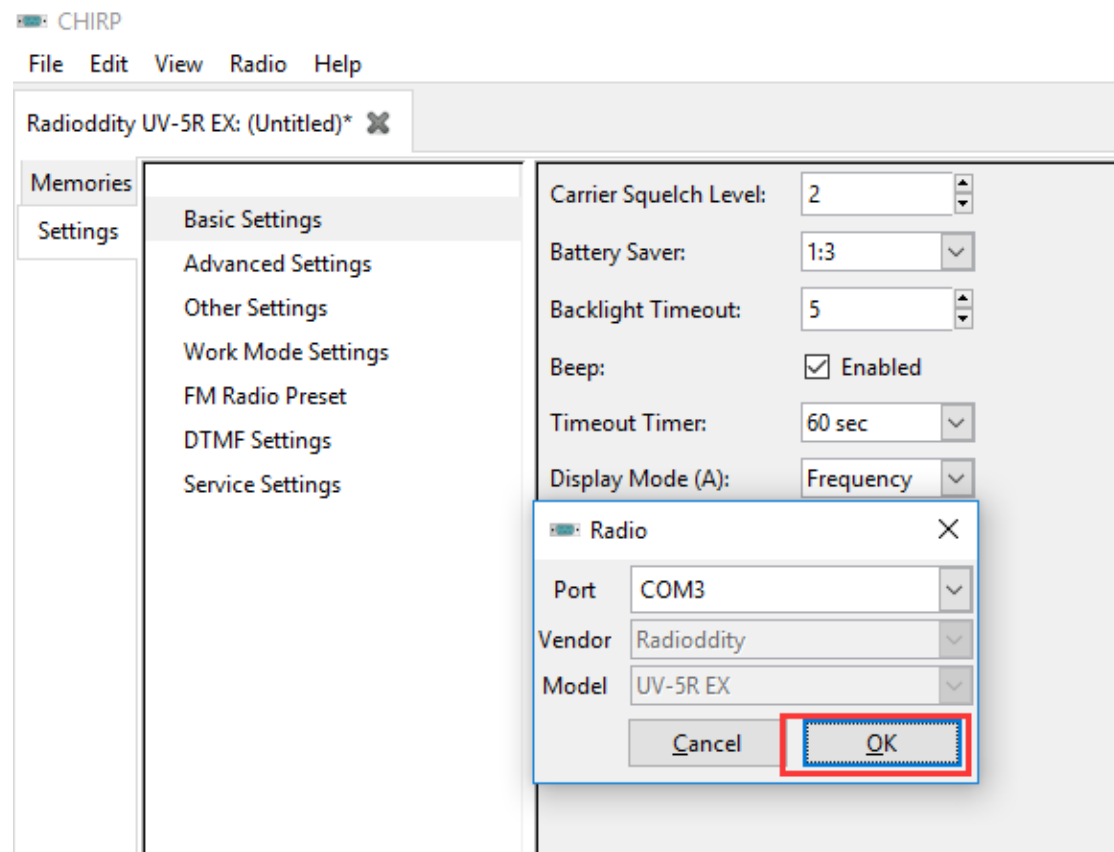
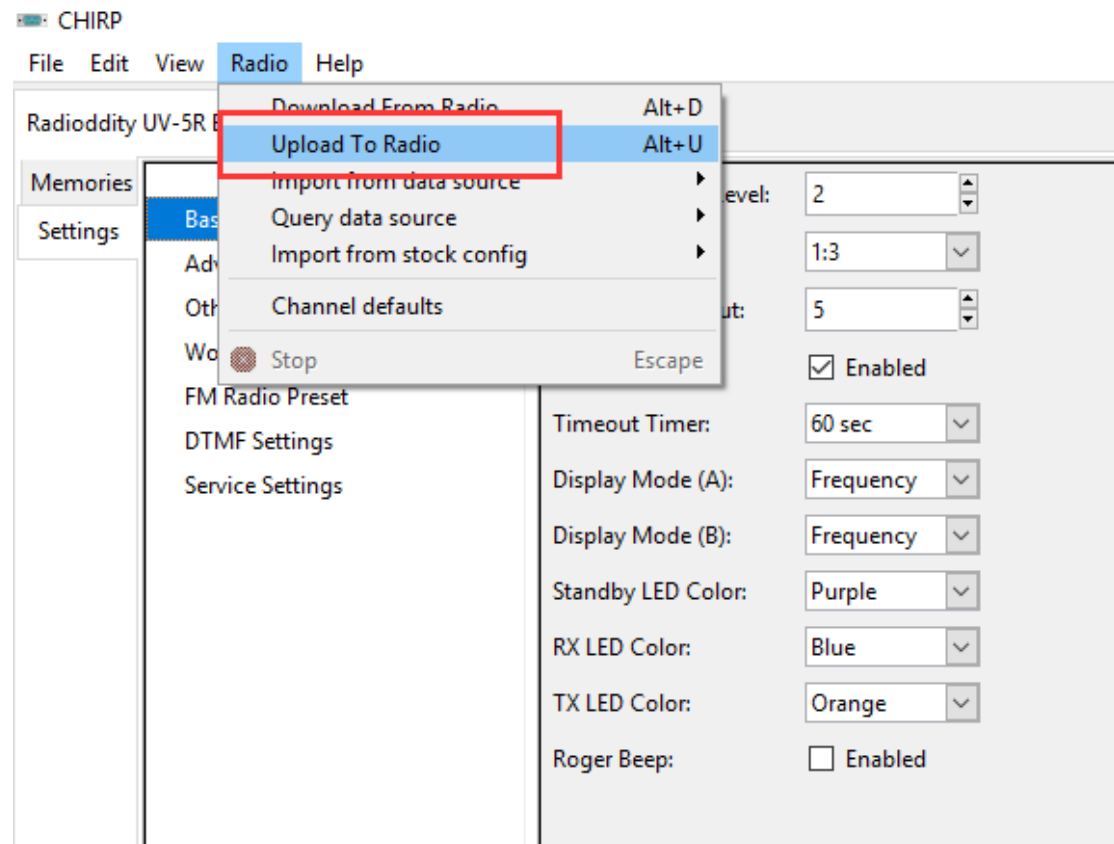
RX LED Color: Blue

TX LED Color: Orange

Roger Beep: ☐ Enabled



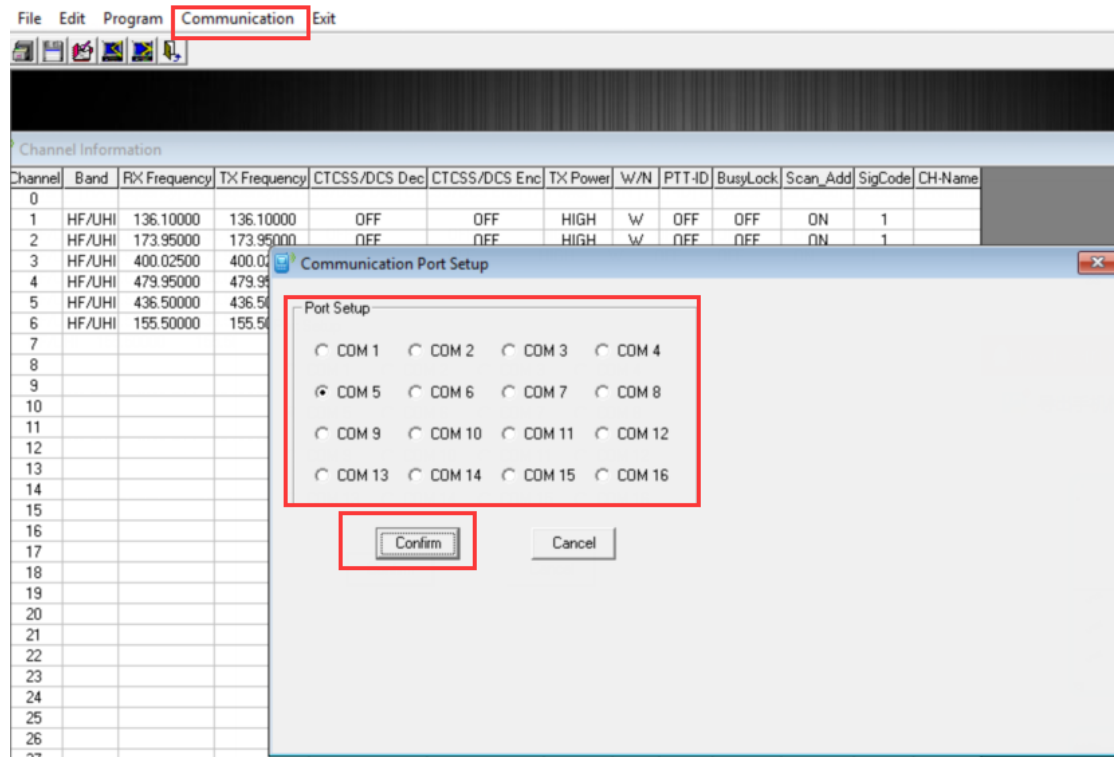
- 5) All the modification will be saved by clicking “Upload To Radio” under “Radio”.
Then you can check the setting you modified after turn off and turn on the radio.



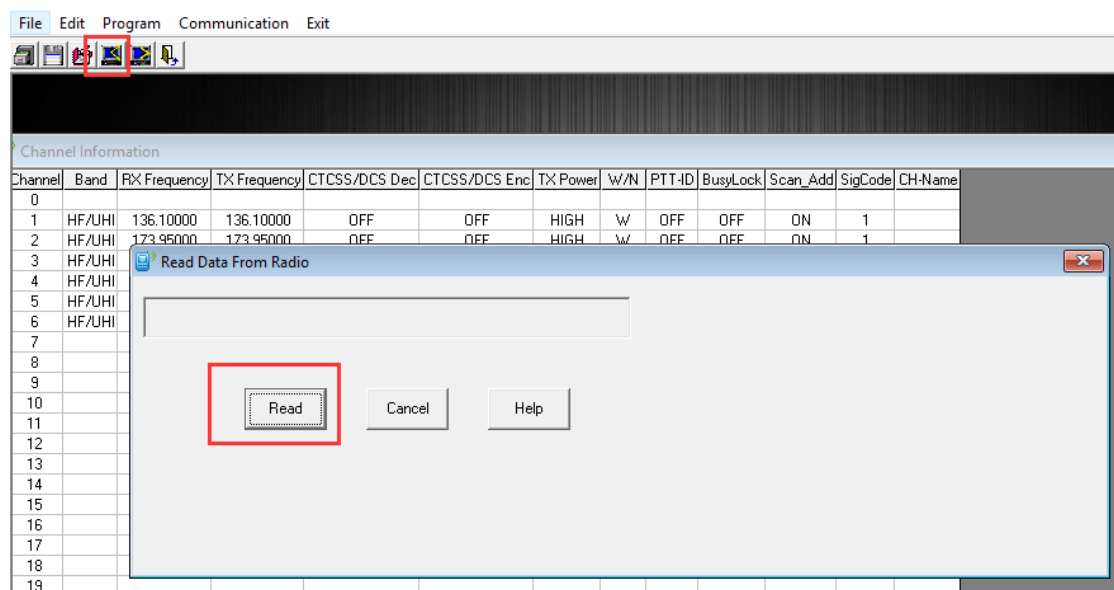


Radiodity

- 1) Download and then open the manufacture software. Click “communication” and choose “COM?” Port, then click “Confirm” button.



- 2) Click the “Read” button, then click “Read” and ready to read the data from your radio.



- 3) You will come to the parameter page, you can adjust the limited parameters (Channel, TX Frequency, RX Frequency, CTCSS/DCS, High/Low Power, and Wide/Narrow Band, etc).

File Edit Program Communication Exit

Channel Information

Channel	Band	RX Frequency	TX Frequency	CTCSS/DCS Dec	CTCSS/DCS Enc	TX Power	W/N	PTT-ID	BusyLock	Scan_Add	SigCode	CH-Name
0	HF/UHF	136.02500	136.02500	OFF	OFF	HIGH	W	OFF	OFF	ON	1	
1	HF/UHF	452.12500	452.12500	69.3	69.3	HIGH	W	OFF	OFF	ON	1	
2	HF/UHF	453.22500	453.22500	91.5	91.5	HIGH	W	OFF	OFF	ON	2	
3	HF/UHF	454.32500	454.32500	136.5	136.5	HIGH	W	OFF	OFF	ON	3	
4	HF/UHF	455.42500	455.42500	151.4	151.4	HIGH	W	OFF	OFF	ON	4	
5	HF/UHF	456.52500	456.52500	192.8	192.8	HIGH	W	OFF	OFF	ON	5	
6	HF/UHF	457.62500	457.62500	241.8	241.8	HIGH	W	OFF	OFF	ON	6	
7	HF/UHF	458.72500	458.72500	D025N	D025N	HIGH	W	OFF	OFF	ON	7	
8	HF/UHF	459.82500	459.82500	D134N	D134N	HIGH	W	OFF	OFF	ON	8	
9	HF/UHF	461.92500	461.92500	D274N	D274N	HIGH	W	OFF	OFF	ON	9	
10	HF/UHF	462.22500	462.22500	D346N	D346N	HIGH	W	OFF	OFF	ON	10	
11	HF/UHF	463.32500	463.32500	D503N	D503N	HIGH	W	OFF	OFF	ON	11	
12	HF/UHF	464.42500	464.42500	D073I	D073I	HIGH	W	OFF	OFF	ON	12	
13	HF/UHF	465.52500	465.52500	D703I	D703I	HIGH	W	OFF	OFF	ON	13	
14	HF/UHF	402.22500	402.22500	OFF	OFF	HIGH	W	OFF	OFF	ON	14	
15	HF/UHF	437.42500	437.42500	OFF	OFF	HIGH	W	OFF	OFF	ON	15	
16	HF/UHF	479.97500	479.97500	OFF	OFF	HIGH	W	OFF	OFF	ON	1	
17	HF/UHF	138.55000	138.55000	OFF	OFF	HIGH	W	OFF	OFF	ON	1	
18	HF/UHF	157.65000	157.65000	OFF	OFF	HIGH	W	OFF	OFF	ON	1	
19	HF/UHF	172.75000	172.75000	OFF	OFF	HIGH	W	OFF	OFF	ON	1	
20	HF/UHF	438.50000	438.50000	OFF	OFF	HIGH	W	OFF	OFF	ON	1	
21	HF/UHF	155.70000	155.70000	OFF	OFF	HIGH	W	OFF	OFF	ON	1	
22												
23												
24												
25												
26												
27												
28												

Default Clear Close

- 4) Click "Optional Features" under "Edit", then will pop up the page of "Optional Features", you can adjust the limited parameters (VOX Function, Squelch, Backlit, DTMF, FM Radio, Voice Prompt, Scanning, VFO Mode, etc.).

File Edit Program Communication Exit

Channel Information

Optional Features

DTMF

Channel	Band	RX Frequency	TX Frequency	CTCSS/DCS Dec	CTCSS/DCS Enc	TX Power
0	HF/UHF	136.02500	136.02500	OFF	OFF	HI
1	HF/UHF	452.12500	452.12500	69.3	69.3	HI
2	HF/UHF	453.22500	453.22500	91.5	91.5	HI
3	HF/UHF	454.32500	454.32500	136.5	136.5	HI
4	HF/UHF	455.42500	455.42500	151.4	151.4	HI
5	HF/UHF	456.52500	456.52500	192.8	192.8	HI
6	HF/UHF	457.62500	457.62500	241.8	241.8	HI
7	HF/UHF	458.72500	458.72500	D025N	D025N	HI
8	HF/UHF	459.82500	459.82500	D134N	D134N	HI
9	HF/UHF	461.92500	461.92500	D274N	D274N	HI
10	HF/UHF	462.22500	462.22500	D346N	D346N	HI
11	HF/UHF	463.32500	463.32500	D503N	D503N	HI

File Edit Program Communication Exit

Optional Features

Time Out Timer(TOT)[S]

Squelch Level

VOX

Voice Annunciation

ABR

Work Mode

☐ Frequency ☒ Channel CHT

Channel Mode

☒ Menu ☒ Reset

A Channel Disp Way

B Channel Disp Way

DTMF-ST

Save

Scan_Rev

PTT_ID

PTT_Delay

☐ K_Lock

☐ Auto Lock

☐ BCL

☒ Beep

A Band Frequency Mode

Frequency MHZ

Band

Freq Range

TX Power

RX QT/DQT

TX QT/DQT

W/N

Step Frequency

SFT_D

Offset MHZ

Signal Code

B Band Frequency Mode

Frequency MHZ

Band

Freq Range

TX Power

RX QT/DQT

TX QT/DQT

W/N

Step Frequency

SFT_D

Offset MHZ

Signal Code

Work Band

Wait Back Light

RX Back Light

TX Back Light

Tail noise Clear

Pass Rept noise

Pass Rept noise(ms)

Power On Disp

☒ FM Radio Enabled

☒ Alarm Sound

Alarm Mode

Roger

TX Under TDR Star

☐ TDR

Default Close

5) If you want to modify the DTMF function, you can get into the DTMF page by clicking "DTMF" under "Edit".

File Edit Program Communication Exit

DTMF Encode/Decode

DTMF Encode

Number	Code
1	20202
2	11111
3	22222
4	33333
5	44444
6	55555
7	66666
8	77777
9	88888
10	99999
11	12121
12	34343
13	56565
14	78787
15	30303

DTMF Speed (On Time)

DTMF Speed (Off Time)

Group Code

ANI Code

☐ Press PTT to Send

☒ Release PTT to Send

Default Close



- 6) Finally, all the modification will be saved by clicking “Write” button, then clicking the “Write” button on the popup.

And you can check the setting you modified after turn off and turn on the radio.

