



Installation and Operation Instructions
Luxury Towel Warmer
Free Standing or Wall Mounted



www.atmor.net

P.N. 197211



READ THE ENTIRE INSTRUCTION MANUAL THOROUGHLY BEFORE BEGINNING INSTALLATION.

DO NOT IMMERSE TOWEL WARMER IN WATER. RISK OF ELECTRIC SHOCK MAY OCCUR.

CAUTION – TOWEL WARMER IS HOT.

Unpack the Towel Warmer carefully to avoid any damage or loss of parts. When opening the box be sure that the parts are not accidentally discarded.

Warning

- DO NOT place Towel Warmer inside a shower, bathtub, sauna, steam enclosure or any other wet location with elevated temperature as Towel Warmer may cause electric shock.
- NEVER leave children unattended while Towel Warmer is in use.
- This unit is for only warming towels and clothing.
- Always turn off the unit using the ON/OFF button. DO NOT shut off by pulling the plug from the wall socket.
- DO NOT touch plug while wet.

Important:

- Towel Warmer should only be used for its intended use described in this manual.
- As with most products that use heat, there may be a slight odor during the first few uses. This is normal and odor will disappear over time.
- Fabrics that contain soap or detergent residue may show what appears to be scorch marks. Atmor is not responsible for discoloration or damage to fabrics.
- The finish of the Towel Warmer can be protected and maintained by wiping with a soft non-abrasive damp cloth. To reduce risk of burns or injury, only clean the towel warmer when the unit is off and cool to the touch.
- Do not use abrasive cleaning powers, metal polish or chlorine based cleaners as they may damage the unit.

Caution

This appliance is intended to warm clothes and towels. To avoid risk to small children, the Towel Warmer should be installed with the lowest rung hanging at least 23.622" above the floor.

Cleaning

The Towel Warmer is maintenance free. If cleaning is necessary, wipe with a dry soft cloth. Do not use detergents or cleaning solutions.

Specifications

	Free Standing	Wall Mounted
Product Depth (in)	14 (leg length)	2.4 (distance from the unit to the wall)
Product Width (in)	21.8	21.8
Product Height (in)	35.2	35.2
Product Weight (lbs)	4.85	4.85
Amperage (amps)	0.55	0.55
Voltage (volts)	120	120
Wattage (watts)	65	65
Warm-Up Time (minutes)	15	15
Color	Stainless Steel	Stainless Steel
Color/Finish	Polished	Polished
Certifications	UL Listed	UL Listed

Warranty:

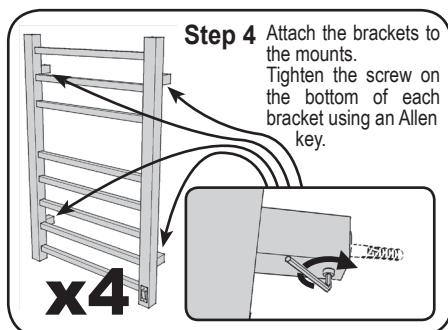
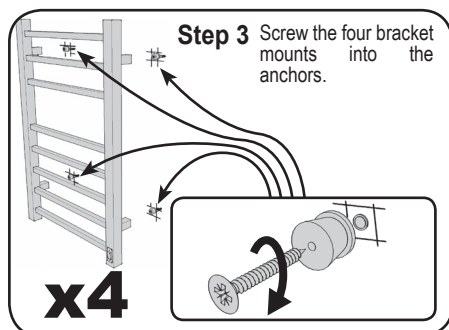
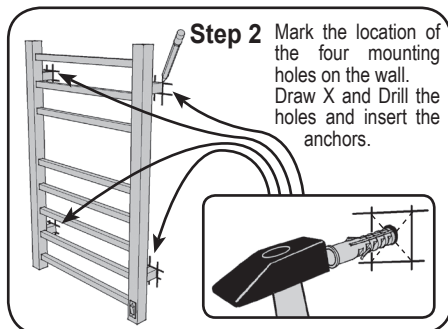
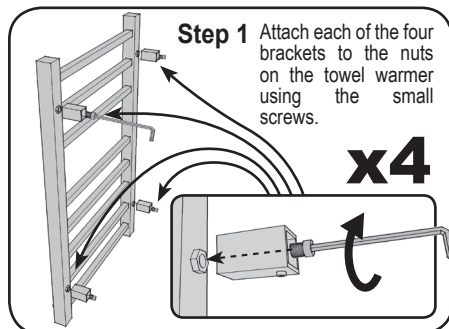
Your product has the benefit of our manufacturer's Guarantee, which covers the product for twelve months from the date of purchase. This gives you the reassurance that if, within that time, your product is proven to be defective because of either workmanship or materials, we will, at our discretion, either repair or replace the product at no cost to you.

- Your sole and exclusive remedy under this limited guarantee shall be product repair or replacement as provided herein. Subject to the Guarantee, the manufacturer makes no warranties, express or implied, with respect to this product. This product is sold as is. Any implied warranty of merchantability or fitness for a particular purpose is hereby disclaimed by the manufacturer. It is expressly agreed that the remedy provided in the guarantee shall be to the exclusion of all others, and that the manufacturer shall not be liable for any consequential or incidental damages arising from use of this product.
- This Guarantee is subject to the following conditions:
- Documentary proof of original purchase date as provided.
- Cosmetic damage (including scratches, dents, chips or other damage to the finish of your product) must be reported within 14 days from the date of purchase in order to qualify for repair or replacement.
- The product has been installed and operated correctly and in accordance with our operating and maintenance instructions.
- The product is used only on the electricity supply printed in the rating plate.
- The product has been used for normal, single-family household domestic purposes only.
- The product has not been altered, serviced, maintained, dismantled, or otherwise interfered with by any person not authorized by us.
- Any repair work must be undertaken by us or by our appointed agent.
- Any parts removed during repair work or any product that is replaced becomes our property.
- The product is used only in the United States.
- The Guarantee does not cover:
 - Damage resulting from transportation, improper use, neglect or interference, accident, alteration, misuse, fire, flood, acts of God, use of consumables not approved by us or as a result of improper installation.
 - Damage resulting from third party actions or external events following purchase.
 - Replacement of any consumable item or accessory.

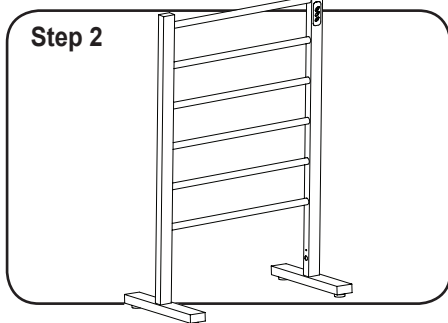
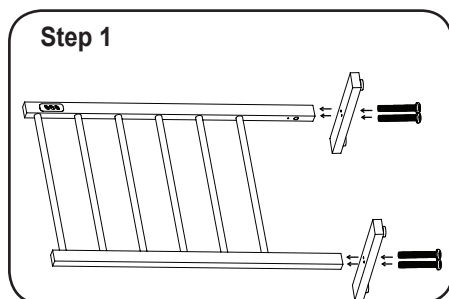
Distributed in North America by Paragon Group USA, LLC
Englewood, NJ USA
Toll Free Number: 1-888-783-6082

Installation Instructions – Wall mount


For your convenience a wall mounting template is included



Installation Instructions – Free Standing






Operating Instructions



- Make sure the Towel Warmer is installed correctly.
- The power cord should be plugged into a socket that has proper voltage. Do not alter the safety plug or use an extension cord with the unit.
- Set the preferred operating mode and press the  ON/OFF button.

Timer Manual Instructions



The control panel features 3 operating modes:

-  ON/OFF – Manual Operating Mode
-  2H with LED indicator – 2 hour Operating Mode
-  4H with LED indicator – 4 hour Operating Mode



Manual Operating Mode:

Press the  ON/OFF button on the front of the unit. The LED indicator light will illuminate, indicating that unit is on and warming your towel. The temperature will remain a consistent 122-131F until the unit is switched off. To turn off the unit, press the  ON/OFF button.


2 Hour Operating Mode:

Press the  ON/OFF button to power the unit. Then press the  2H button. The LED indicator light will illuminate indicating that the unit is on and warming your towel. The unit temperature will remain a consistent 122-131F for 2 hours (at room temperature of 77F). The unit will automatically shut off after 2 hours and the LED indicator light will turn off.

4 Hour Operating Mode:

Press the  ON/OFF button to power the unit. Then press the  4H button. The LED indicator light will illuminate indicating that the unit is on and warming your towel. The unit temperature will remain a consistent 122-131F for 4 hours (at room temperature of 77F). The unit will automatically shut off after 4 hours and the LED indicator light will turn off.

Note

- Should the unit suddenly loose power, press the  ON/OFF button to restart.
- The unit has automatic overheating protection. If the surface temperature exceeds 185F, the unit will stop working. All LED indicator lights will flash 5 times and the unit will automatically turn off. The unit will remain inoperable until the temperature drops to 122F.
- The unit may have an error of ± 30 seconds in detecting temperature fluctuation.

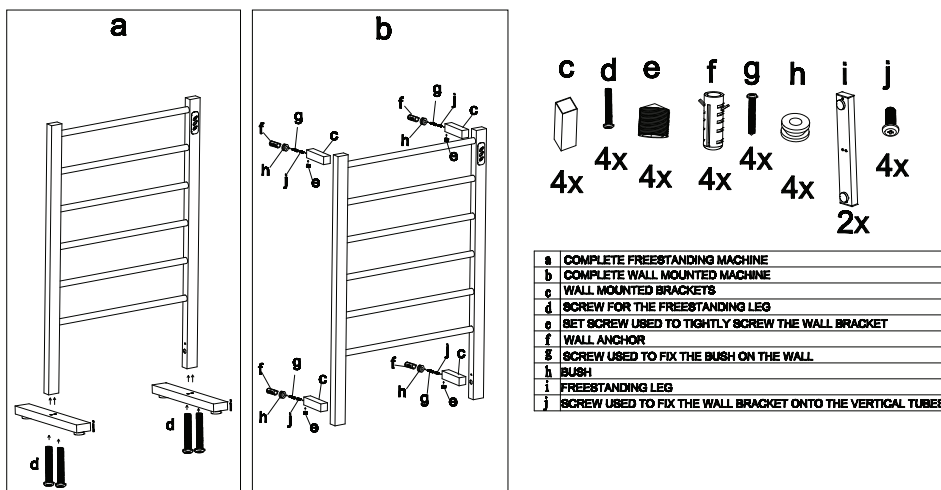


Precautions

- Read installation and operation instructions before use.
- Never leave children unattended when heated Towel Warmer is in use.
- Turn of unit when not in use.
- Do not turn off the unit by pulling the power cable out of the wall socket. Always use the **Ⓢ** ON/OFF button.
- Never operate unit if the cord or plug has been damaged.
- Not for outdoor use.
- Do not use the Towel Warmer in areas where flammable liquids such as gasoline or paints are stored.
- Towel Warmer should only be used as intended and described in the manual. Any other use is not recommended by the manufacturer and could result in electric shock, fire or personal injury.
- Unit is not designed for use with an extension cable. Power cord should be directly plugged into wall socket.
- Operating instructions should be saved for future reference.

ONLY OPERATE TOWEL WARMER IN AN UPRIGHT POSITION.

Parts/Assembly Diagrams with Graphics



ATMOR