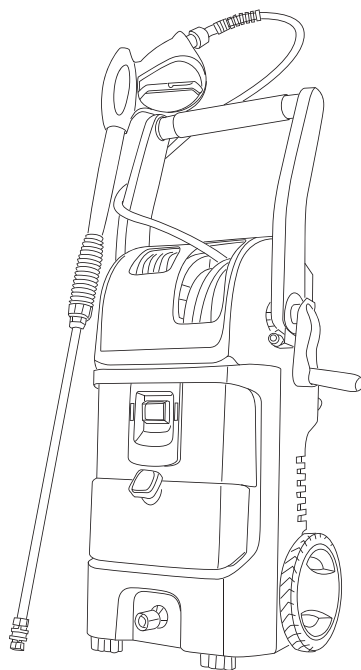




MC1800



English 1

Electric High-Pressure Washer - Operator's Manual

Before operating this product, please read this manual thoroughly and retain it for future reference.

1-866-902-9690
www.MightyCleanUSA.com

Do not return product to place of purchase. If you have any questions, call our toll- free hotline.

1-866-902-9690

www.MightyCleanUSA.com

TABLE OF CONTENTS

Important Safety Instructions.....	1
Safety Features.....	4
Parts List and Diagram.....	5
Assembly and Operation Instructions.....	6
Machine Assembly.....	6
Operation Instruction.....	8
Cleaning Detergents Dispenser.....	10
Shut Down and Storage.....	13
Cleaning and Maintenance.....	14
Troubleshooting.....	15
Technical Data.....	19
Warranty.....	20

IMPORTANT SAFETY INSTRUCTIONS

Before each use, please read all of the safety precautions.

Please pay particular attention to all sections with the following symbols.

WARNING

Could cause injury or death if not followed.

CAUTION

Could damage machine if not followed.

WARNING

When using this product, basic precautions should always be followed, including:

- 1 Read all instructions before using the product.
- 2 To reduce the risk of injury, do not operate the product near children.
- 3 Learn how to stop this product and release pressure quickly. Be thoroughly familiar with the controls.
- 4 Stay alert - watch what you are doing.
- 5 Do not operate this product when fatigued or under the influence of alcohol or drugs.
- 6 Keep operating area clear of all people and pets.
- 7 Do not stand on unstable surfaces. Do not overreach or stand on unstable support. Keep good footing and balance at all times.
- 8 Follow the maintenance instructions specified in the manual.
- 9 This product is provided with a Ground Fault Circuit Interrupter (GFCI) built into the power cord. If replacement of the plug or cord is needed, use only manufacturer replacement parts.
- 10 This product or its power cord contains lead, a chemical known to cause cancer, birth defects or other reproductive harm. Wash hands after handling.



IMPORTANT SAFETY INSTRUCTIONS

⚠ WARNING ⚠

Risk of Injury

Injection Hazard

- Product can cause serious injury if the spray penetrates the skin.
- Do not point the gun at anyone or any part of the body. In case of penetration, seek medical aid immediately.

⚠ WARNING ⚠

Risk of Injury

Do not direct discharge stream at self or other persons.

- High-pressure jet can be dangerous if misused.
- The jet must not be directed at persons, animals, electrical devices, or the product itself.

⚠ WARNING ⚠

Risk of Explosion

- Do not spray flammable liquids.
- Do not use acids and solvents in this product.
- These products can cause physical injuries to the operator and irreversible damage to the pressure washer.

⚠ WARNING ⚠

Risk of Electric Shock

- High-pressure jet can be dangerous if misused.
- The jet must not be directed at persons, animals, electrical devices, or the product itself.

⚠ CAUTION ⚠

Gun Kicks Back

- Hold with both hands.
- The trigger handle safety lock prevents the trigger from being engaged accidentally.
- This safety feature DOES NOT lock trigger in the On position.

GENERAL SAFETY AND OPERATION RULES

NOTE: Failure to follow the rules listed below can void the warranty on this product.

1. Never operate the product without all components properly connected to the product (handle, gun/ wand assembly, nozzle, etc.).
2. Never operate pressure washer with broken or missing parts. Check product regularly and repair or replace worn or damaged parts immediately.
3. Never put hand or fingers over the nozzle or spray tip while operating the product.
4. Never spray flammable liquids or use pressure washer in areas containing combustible dust, liquids or vapors. An electric spark could cause an explosion.
5. Never leave the wand unattended while the product is running or switched on.
6. Never disconnect the high pressure discharge hose from the product while the system is pressurized. To release pressure from the product, turn power and water supply off, then depress trigger 2-3 times.
7. Never cover the pressure washer during operation to allow free air cooling.

IMPORTANT SAFETY INSTRUCTIONS

8. Always wear safety glasses or goggles when operating or performing maintenance.
9. Always move switch on product to "Off" position before connecting or disconnecting cord to electrical outlets.
10. Always turn water supply on before turning pressure washer on unless draining for storage.
Running pump dry causes serious damage.
11. Always hold trigger handle and wand firmly when starting and operating the product.
12. Always follow detergent manufacturer's label recommendations for proper use of detergents. Always protect eyes, skin and respiratory system from detergent if used.
13. Always lock the trigger of the trigger handle in the safety position when not in use.
14. Do not use pressure that exceeds the operating pressure of any of the parts (hoses, fittings, etc.) in the pressurized system. Never use with any other manufacturer's accessories or components.
15. Do not spray electrical apparatus and wiring or the product itself.
16. Do not operate the pressure washer with the inlet water filter removed. Keep filter clear of debris and sediment.
17. Discharge residual pressure by depressing the trigger until no more water comes out of the nozzle.
18. Keep clear of nozzle. Never direct high-pressure spray at any person, animal or self.
19. To minimize the amount of water getting into the pressure washer, the product should be placed as far as possible from the cleaning site during operation.

GROUND FAULT CIRCUIT INTERRUPTER PROTECTION

This pressure washer is provided with a Ground Fault Circuit Interrupter (GFCI) built into the power supply cord. This device provides additional protection from the risk of electrical shock. Should replacement of the plug or cord become necessary, use only manufacturer replacement parts that include GFCI protection. All services must be done by an Authorized Service Technician. Unauthorized service will void warranty. See Page 4 for testing procedure.


WARNING

Connect directly to outlet. Do not use product with extension cord. The use of an extension cord could override the GFCI built into the plug of the power supply cord resulting in the risk of electrical shock.

DOUBLE-INSULATION INSTRUCTION



In a double-insulation product, two systems of insulation are provided instead of grounding. No grounding is provided on a double-insulated product, nor should a means for grounding be added to the product.

Servicing a double-insulated product requires extreme care and knowledge of the system, and should be done only by Authorized Service Technician. Replacement parts of a double-insulated product must be manufacturer replacement parts. A double-insulated product is marked with the words "**DOUBLE-INSULATION**" or "**DOUBLE-INSULATED**". The symbol "" may also be marked on the product.

SAVE THESE INSTRUCTIONS



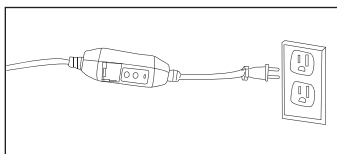
SAFETY FEATURES

TOTAL STOP SYSTEM

The pressure washer is equipped with a total stop system (TSS) that will sense when the trigger on the handle is depressed or released. It will open the power circuit to the motor, and cause the pressure washer motor to stop. The motor will start again when the trigger is depressed.

⚠ WARNING ⚠

The pressure washer is also equipped with a main power On/Off switch located on the product. It should always be moved to the “Off” position when the pressure washer is not being used to prevent possible injury or damage.



Ground Fault Circuit Interrupter Protection

This device provides additional protection from the risk of electrical shock. Plug the Ground Fault Circuit Interrupter (GFCI) into a power outlet. Indicator should turn red. TEST BEFORE EACH USE. Press the “TEST” button. Red indicator should disappear. Press “RESET” button again for use. Do not use if above test fails.

EXTENSION CORDS

If possible, do not use extension cords with this product. However, if you must use one, observe all of the warnings and instructions listed below:

⚠ WARNING ⚠

Extension cords are not recommended unless these are plugged into a GFCI found in circuit boxes or protected receptacles.

Use A Sufficient Gauge:

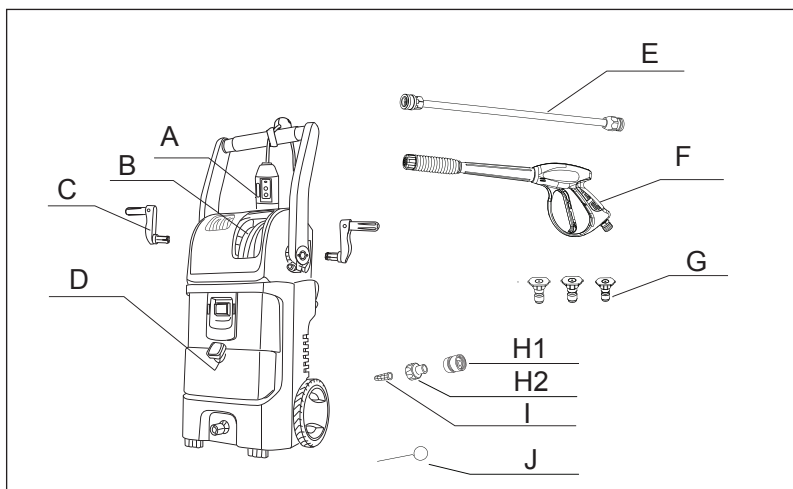
Maximum cord length: 50' (15.2 m). Only use 12 or 14 AWG rated extension cords.

- Use only extension cords that are intended for outdoor use. These extension cords are identified by a marking that reads “Acceptable for use with outdoor appliances; store indoors while not in use.”
- Use only extension cords having an electrical rating not less than the rating of the product.
- Do not use damaged extension cords. Examine extension cord before using and replace if damaged. Do not abuse extension cord and do not yank on any cord to disconnect.
- Keep cord away from heat and sharp edges.
- Always disconnect the extension cord from the receptacle before disconnecting the product from the extension cord.
- To reduce the risk of electric shock, keep all connections dry and off the ground. Do not touch plug with wet hands.

⚠ CAUTION ⚠

This product has been designed for use with detergents that are specifically approved for pressure washer use. The use of other cleaning detergents may affect the operation of the product and void the warranty.

PARTS LIST AND DIAGRAMS



Item No.	Quantity	Part Name
A	1	Ground Fault Circuit Interrupter (GFCI)
B	1	High-pressure Hose
C	2	Hand Crank
D	1	Detergent Tank
E	1	Quick-connect Wand
F	1	Trigger Handle
G	3	Spray Tips
H1	1	Quick-connect Coupling
H2	1	Inlet Adaptor
*I	1	Water Filter Screen
J	1	Tip Cleaning Needle

* Water filter comes pre-attached on the water inlet, located on the front of the pressure washer.

ASSEMBLY AND OPERATION INSTRUCTIONS

Surface Preparation

Before starting any cleaning task, it is important to inspect the area for objects that could create a hazard. Remove any objects from the work area that could be tripped over, such as toys or outdoor furniture. Ensure that all doors and windows are closed tightly.

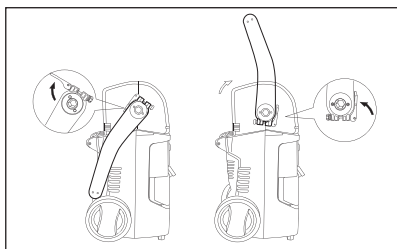
Water Supply (Cold Water Only)

Only draw cold water through the washer. For use with cold water supply only. Water hose must be at least a 1/2" (13 mm) in diameter. Flow rate of water supply must not fall below 2 GPM (gallons per minute) [9.1 LPM (liters per minute)]. Flow rate can be determined by running the water for one minute into an empty 5-gallon (19 L) container. Measure the volume of water in bucket after one minute. The water supply temperature must not exceed 104°F (40°C).

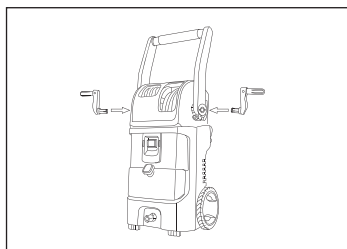
⚠ CAUTION ⚠

- Never use the pressure washer to draw in water contaminated with solvents (e.g. paint thinners, gasoline, oil, etc.).
- Dirt in the water inlet will damage the pressure washer. To avoid this risk, we recommend checking.
- Always prevent debris from being drawn into the washer by using a clean water source and an additional accessory water filter if required.
- To prolong the life of the washer, rest the washer for minutes after every 30 minutes of use.

MACHINE ASSEMBLY

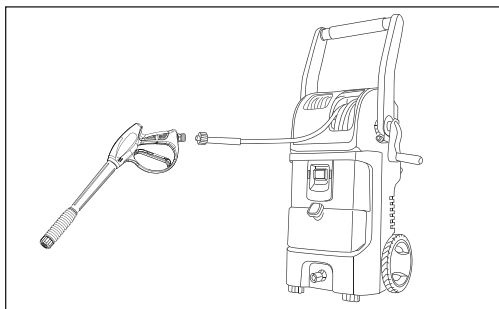


Raise handle to upright position and set the position by cam - lock.



Attach hand cranks onto the hose reel and cord reel on both sides. Insert in holes and snap into place. No tools required.

ASSEMBLY AND OPERATION INSTRUCTIONS



Attach high-pressure hose from hose reel to the gun wand trigger handle, hand tighten until two parts are locked.

Recommendation for
spray tip usage:

Yellow

15°

To clean larger
areas (e.g. drive
way)



White

40°

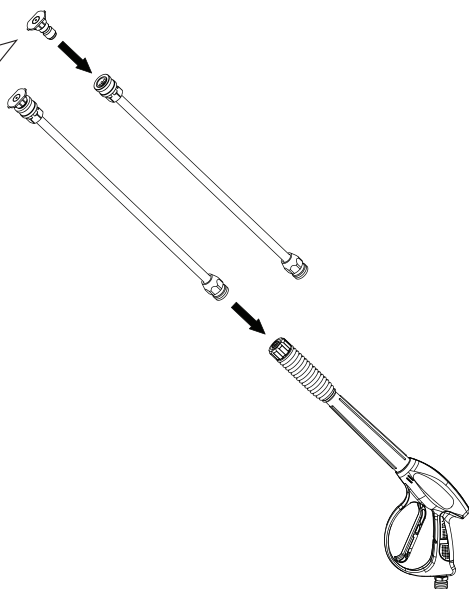
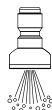
For delicate cleaning
and detailing
(e.g. vehicles)



Black

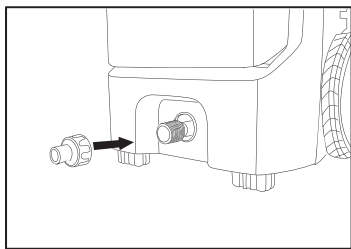
Low-Pressure

To apply detergent

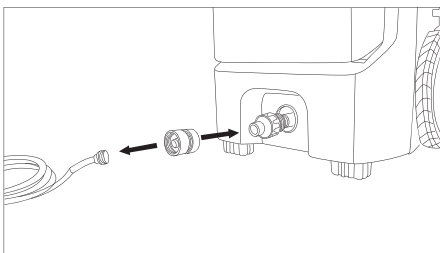


Attach desired color coded spray tip to quick - connect wand by pushing to ensure it is clicked in securely. Insert wand into the trigger handle, hand tighten until two parts are locked securely.

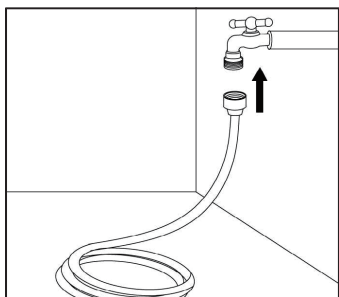
ASSEMBLY AND OPERATION INSTRUCTIONS



Remove and discard the cap on the washer's water inlet and check the water filter pre-attached inside the water inlet. Attach the inlet adaptor of garden hose quick – connect coupling on the water inlet, hand tighten until two parts are locked.



Attach garden hose quick-connect coupling to garden hose, hand tighten until two parts are locked. Connect to inlet adaptor and ensure it is clicked in securely.



Attach garden hose to cold water source and turn water on full. The water temperature must not exceed 104°F (40°C) and the supply pressure must be between 40 to 80 PSI.

⚠ CAUTION ⚠

The pressure washer must only be used with clean water. Use of unfiltered water or corrosive chemicals will damage the pressure washer.

This pressure washer is not intended to pump hot water. Never connect it to a hot water supply as it could cause injury and will significantly reduce the life of the pump.

OPERATION INSTRUCTIONS

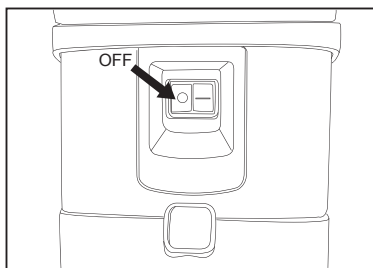
⚠ WARNING ⚠

Risk of injury, do not direct discharge stream at self or other persons.

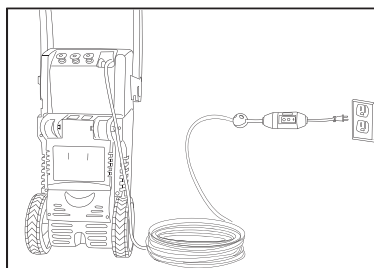
⚠ WARNING ⚠

Before cleaning any surface, an inconspicuous area should be cleaned to test spray pattern and distance for maximum cleaning results.

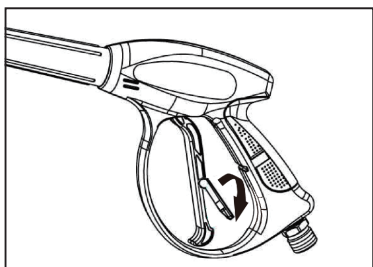
ASSEMBLY AND OPERATION INSTRUCTIONS



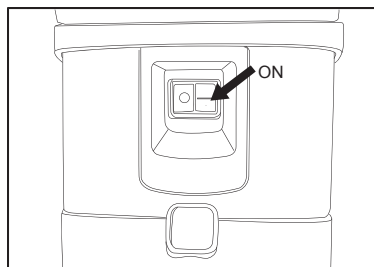
Make sure the On/Off switch is on the "Off" position before plugging in the pressure washer, press the switch with mark "O" to ensure it is off.



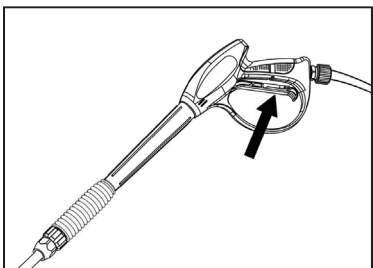
Completely unwind power cord by pulling and plug the Ground Fault Circuit Interrupter (GFCI) into a power outlet. Indicator should turn red. **TEST BEFORE EACH USE.** Press the "TEST" button. Red indicator should disappear. Press "RESET" button again for use. Do not use if above test fails.



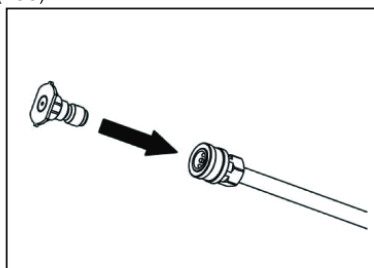
Ensure the trigger safety latch is released by pushing it down and engage the trigger for a few seconds to discharge the residual pressure in the high-pressure hose.



Turn on the pressure washer by pressing the switch with mark "-". The washer will run for a few seconds to build up pressure, then will stop on the function of total stop system (TSS).



Depress the trigger until there is a steady stream of water. Before changing spray tip, switch the washer off, depress trigger to release pressure and activate trigger handle safety latch. Change the spray tip as per the recommendation on page 7, if necessary.



ASSEMBLY AND OPERATION INSTRUCTIONS

⚠ CAUTION ⚠

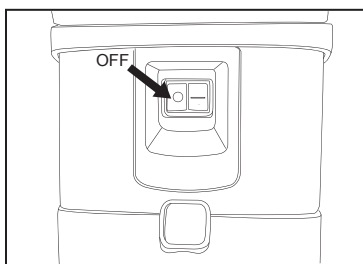
Make sure spray tip and wand is well locked. Do not move the spray tip while trigger is depressed.

⚠ CAUTION ⚠

If painted surfaces are peeling or chipping, use extreme caution as pressure washer may remove the loose paint from the surface.

For most cleaning applications, a forty degree (40°) spray angle is recommended to avoid damage to the surface being sprayed.

The pressure of spray on the surface will increase when you move the wand closer to the surface.



Turn off the pressure washer by pressing the switch with mark "O", set the trigger safety latch. For storage, drain washer after use by removing water connection, turning on the washer for a few seconds and depressing gun trigger to release remaining water in the pump. Turn off immediately.

CLEANING DETERGENTS DISPENSER

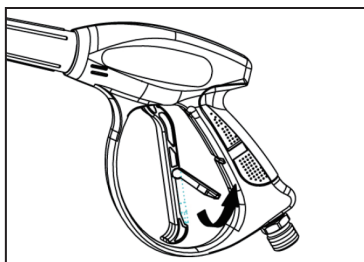
Only use cleaning detergents recommended for pressure washers. Always follow detergent manufacturer's label recommendations for proper use of detergents or soap. Always protect eyes, skin and respiratory system from detergent if used.

⚠ CAUTION ⚠

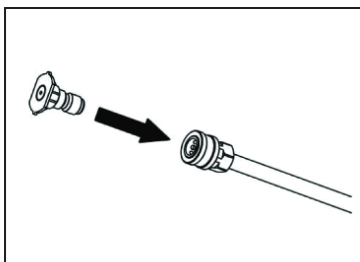
Working with detergent ensures a quick soaking of the dirt, and allows the high-pressure water to penetrate and remove the dirt more effectively.

To apply detergents you must be operating at low-pressure. This provides a gentle application of detergent, with the pressure equivalent to a garden hose. The high-pressure setting is used for cleaning; you cannot apply detergents when working at high-pressure. Always test detergent in an inconspicuous area before use.

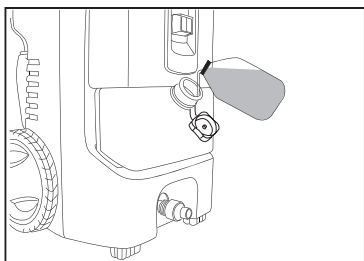
ASSEMBLY AND OPERATION INSTRUCTIONS



1 Engage trigger safety lock.



2 Attach the low-pressure spray tip (black) for soap or detergent application. Detergent application will only work with low-pressure spray tip.



3 Lift up to remove the cap of detergent tank, fill tank with detergent or soap and replace the cap. Apply detergent as instructed by the detergent manufacturer.

- 4 Turn on the pressure washer. Depress trigger to operate washer. The liquid detergent will automatically mix with water, and be discharged through the spray tip.
- 5 Allow detergent to remain on the surface for a short time before rinsing. Do not allow detergent to dry on surface.
- 6 Rinse with clean water under high-pressure. On a vertical surface, rinse from the bottom up, then rinse from the top down to avoid streaking. Hold nozzle 6"-8" (15-20 cm) from the cleaning surface, at a 45° angle.
- 7 When you have finished using the detergent dispensing system, fill detergent tank with clean water to rinse the system clean. Depress the trigger for one minute at low-pressure so that all detergents remaining in the system are thoroughly flushed out. Remove detergent tank to empty the remaining water, and rinse it until it is thoroughly cleaned.

ASSEMBLY AND OPERATION INSTRUCTIONS

⚠ CAUTION ⚠

Fail to follow detergent clean procedure will cause the dispensing system to become clogged.

Damage may occur to painted surface if chemical is allowed to dry on surface.

Wash and rinse a small section at a time. Avoid working on hot surfaces or in direct sunlight.

Never Use:

- Bleach, chlorine products and other corrosive chemicals
- Liquids containing solvents (i.e., paint thinners, gasoline, oils)
- Tri-sodium phosphate products
- Ammonia products
- Acid-based products

These chemicals will harm the pressure washer and will damage the surface being cleaned.

Failure to follow the above instructions will void product warranty.

SHUT DOWN AND STORAGE

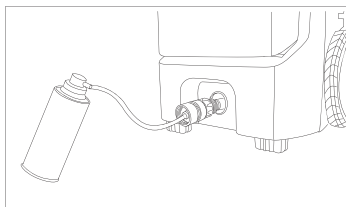
- 1 (If you are not using detergent, go directly to Step 2.) When you have finished using the detergent dispensing system, fill detergent tank with clean water to rinse the system clean. Depress the trigger for one minute at low-pressure so that all detergents remaining in system are thoroughly flushed out. Remove detergent tank to empty the remaining water, and rinse it until it is thoroughly cleaned.
- 2 Turn off water supply and disconnect the garden hose from the faucet and the water inlet on the washer.
- 3 Depress the trigger for a few seconds to release any remaining water until water spray stops, turn off washer immediately.
- 4 Unplug the Ground Fault Circuit Interrupter (GFCI) from the power outlet and wrap power cord into the cable reel by rotating the reel with hand crank.
- 5 For storage, disconnect the high-pressure hose from the trigger handle and wrap hose into the hose reel by rotating the reel with hand crank.
- 6 Engage trigger handle safety latch and disconnect the quick – connect wand from trigger handle, disconnect and replace the spray tip to tip holder on the washer, insert the wand into the wand holder.
- 7 Store the washer and accessories in a room that does not reach freezing temperatures. Do not store near furnace or other sources of heat as it may dry out the pump seals.

⚠ WARNING ⚠

Turn off water supply and depress trigger to depressurize the washer. Failure to do so could result in personal injury due to discharge of high-pressure water.

OPTIMUM WINTERIZING PROCEDURE

Winterizing your pressure washer will help protect and prolong its life. We strongly recommend you follow the below steps using pump saver*. This will keep the internal parts lubricated, protected from rust, and prevents the pump from freezing.



1. Connect the pump saver hose onto the inlet adaptor and quick-connect coupling.
2. Depress button on top of pump saver container.
3. Continue until fluid exits the pressure hose for 15 seconds.
4. Remove the hose from pump inlet.

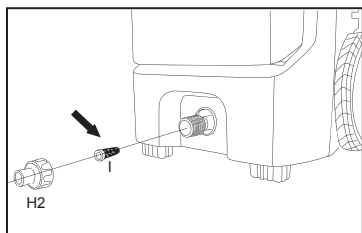
*NOTE: Pump saver is not supplied with your pressure washer. It can be purchased where you purchased this product and at most home center stores. For more information call: 1-866-902-9690.



CLEANING AND MAINTENANCE

Water Filter Screen

The pressure washer is equipped with a water filter screen to protect the pump. If the screen is not kept clean, the flow of water to the pressure washer will be restricted and the pump may be damaged.



1. To clean inner water screen, remove the inlet adaptor and remove the filter screen from the pump inlet.
2. Rinse screen until it is free of debris and blockage.
3. Replace the filter screen and inlet adaptor immediately to prevent any foreign matter from entering the pump.

Main Body Cleaning

Use only mild soap and damp cloth to clean the main body.

⚠ WARNING ⚠

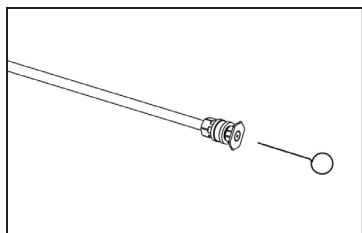
Never use the pressure washer to clean itself

Connections

Connections on pressure washer hoses, trigger handle and spray wand should be cleaned regularly and lubricated with non-water soluble grease. Failure to do so could void the product warranty.

Spray Tips Only

Clogging of the spray tips causes the pump pressure to be too high and cleaning is immediately required. Clean the spray tips by carefully inserting the tip cleaning needle provided, or a thin and sharp instrument (i.e. sewing needle) into the tip to remove any dirt deposited.



⚠ WARNING ⚠

To assure product safety and reliability, repairs should be performed by authorized service technician or other qualified service personnel, always use manufacturer replacement parts.
Service or repairs made by unauthorized personnel will void the product warranty.

TROUBLESHOOTING

Disconnect the pressure washer from the power source before making any repairs.

Symptom	Cause	Solution
Motor will not start.	On/Off switch is in the "Off" (O) position.	Turn switch to the "On" (-) position.
	GFCI is not plugged in.	Plug in GFCI.
	Extension cord is too long. Extension cord is not proper gauge. Extension cord is damaged.	Replace extension cord with either a 25' (7.6 m) 14/3 gauge cord or a 50' (15 m) 14/3 gauge cord.
	Electrical outlet does not supply adequate power.	Try a different outlet.
	Tripped pressure washer thermal protector.	Allow to cool, and restart washer.
Washer does not reach high-pressure.	Diameter of garden hose is too small.	Replace with a 1" (25 mm) or 5/8" (16 mm) garden hose.
	Water supply is restricted.	Check garden hose for kinks, leaks and blockage.
	Not enough water supply.	Open water source fully.
	Water filter screen is clogged.	Remove filter and rinse in warm water.
	Power nozzle is in low-pressure position.	Replace with desired high-pressure tip.

(Continued on page 16)



TROUBLESHOOTING

Symptom	Cause	Solution
Washer does not reach high-pressure.	Pump is sucking air.	Check that hoses and fittings are airtight. Turn off washer, and purge pump by squeezing trigger handle until a steady flow of water emerges through the spray tip.
Output pressure varies high and low.	Not enough inlet water supply.	Turn water on fully. Check garden hose for kinks, leaks or blockage.
	Pump is sucking air.	Check that hoses and fittings are airtight. Turn off washer, and purge pump by squeezing trigger handle until a steady flow of water emerges through the spray tip.
	Water filter screen is clogged.	Remove filter and rinse with warm water.
	Discharge nozzle is obstructed.	Blow out or remove debris with a tip cleaning needle.
	Calcified gun, hose or power nozzle.	Run distilled vinegar through detergent tank.
Detergent is not working.	Detergent container is empty.	Add more detergent.
	Detergent bottle or suction tube not properly connected.	Check connections.
	Detergent is too thick.	Dilute detergent.

TROUBLESHOOTING

Symptom	Cause	Solution
Detergent is not working.	Filter on detergent suction tube is clogged.	Run warm water through filter to remove build-up.
	Damaged or clogged detergent suction tube.	Remove obstruction or replace detergent suction tube.
	Nozzle is in high-pressure position.	Use low-pressure (black) tip.
	Discharge nozzle is obstructed.	Blow out or remove debris with a tip cleaning needle.
Garden hose connection leaks.	Loose fittings.	Tight fittings.
	Missing/worn rubber washer.	Insert new washer.
Spray wand, extension, or nozzle leaks.	Spray nozzle not properly attached.	Ensure quick-connect wand is attached securely. Ensure spray tip is clicked in securely.
	Pump is sucking air.	Call the Toll-Free Hotline: 1-866-902-9690
Pump is noisy.	Pump is sucking air.	Check that hoses and fittings are airtight. Turn off washer and purge pump by squeezing trigger handle until a steady flow of water emerges through the spray tip.
	Water filter is clogged.	Remove water filter and rinse in warm water.
Water leaks from pump (up to 10 drops per minute is permissible).	Loose fittings.	Check that all fittings are tight.

(Continued on page 18)



TROUBLESHOOTING

Symptom	Cause	Solution
Water leaks from pump (up to 10 drops per minute is permissible).	Water seals are damaged or worn.	Call the Toll-Free Hotline: 1-866-902-9690
Oil is dripping.	Oil seals are damaged or worn.	Call the Toll-Free Hotline: 1-866-902-9690
Motor buzzes but fails to run.	Supply voltage below minimum.	Verify that only the pressure washer is running on this circuit.
	System has residual pressure.	Turn washer off, squeeze trigger on spray wand to release pressure, then turn washer on.
	Voltage loss due to extension cord.	Unplug any extension cords attached and plug the washer directly into the outlet.
	Pressure washer not used for long periods.	Call the Toll-Free Hotline: 1-866-902-9690
	Residual friction among components. Washer might hum.	Disconnect water supply and power on for 2 to 3 seconds, repeat couple times or until the motor starts.
No water.	Water supply is off.	Turn on water supply.
	Kink in the garden hose.	Remove kink in garden hose.
	Quick-connect assembly is attached in reverse.	Verify that Inlet adaptor (H2) is attached to washer's water inlet and that the quick-connect coupler (H1) is attached to garden hose.

IF YOU HAVE ANY QUESTIONS, CALL OUR TOLL-FREE HOTLINE:

1-866-902-9690
www.MightyCleanUSA.com

TECHNICAL DATA

Power Source Requirement: 120 V / 60 Hz

Rated Current: 13 AMP

Max. Pressure: 1800 PSI

Max. Flow Rate: 1.6 GPM

Electrical Cord: 35'

High-pressure Hose: 23'

Inlet Water: Cold Tap Water, Max. 104°F / 40°C

Detergent Injection Rate: 3~12%



WARRANTY

Product Warranty

Please keep your original purchase receipt in a safe place as proof of purchase. Warranty coverage for this product must be verified by the original purchase receipt. The warranty period begins on the day that the product was purchased from an authorized retailer of Mighty Clean products. Warranty coverage only applies to the original purchaser and is not transferrable. Warranty coverage is only provided on products purchased from authorized Mighty Clean retailers.

(2) Two-Year Warranty – Pump and Motor

The MC1800 has a 2-Year Limited Warranty from the date of purchase against manufacturer defects for residential use only. Commercial use voids the warranty. This warranty does not cover accidental damage, unreasonable use, normal wear and tear, neglect or non-compliance with the Operating, Safety and Maintenance Instructions. All service, outside of normal maintenance as described in this manual, must be done by an authorized service technician. Any unauthorized service or changes to the original configuration of this product will void the warranty. All parts and accessories used on and with this product must be manufacturer and authorized by SUMEC North America.

(90) Ninety-Day Warranty – Accessories

The accessories included with the MC1800; including hose, trigger handle and wand, and other similar parts are warranted against manufacturer defects for residential use only for a period of 90 days from date of purchase.

Warranty does not cover loss of use or other consequential damages arising from any of the above, nor does it cover repairs made or attempted by unauthorized persons. This warranty is void if the product is used for commercial, rental or industrial purposes. Certain parts, attachments and accessories are subject to normal wear and tear and are excluded from the warranty.

Service and Warranty Claims Process

Contact the Mighty Clean Support Center toll-free at 1-866-902-9690 Monday-Friday between 8:30 AM and 5:00 PM Eastern Time for service and warranty support.

Might Clean USA Service Support agents can help you troubleshoot problems over the phone to get you back up and running as quickly as possible. In the situation where service or warranty inspection is needed, please follow these steps:

1. Contact Mighty Clean USA at 1-866-902-9690 Monday-Friday between 8:30 AM and 5:00 PM Eastern Time.
2. Send in proof-of-purchase and serial number (if applicable) to confirm warranty coverage.
3. If service or a warranty evaluation is requested, Mighty Clean USA will provide an RGA number that should be used in all communications with Mighty Clean USA and is required to be indicated on the product itself and on the outside of the box.
4. All shipments to Mighty Clean USA must have an RGA number. Any shipment received that does not have an RGA number clearly marked on the outside of the box will be refused.
5. All shipments must be sent pre-paid, Mighty Clean USA does not pay for any shipping costs for service or warranty evaluation. Mighty Clean USA is not responsible for any packages that are lost by carrier. We recommend that shipments are made by a carrier that provides tracking and delivery confirmation.

For more information or to ask questions, please call toll-free 1-866-902-9690 Monday-Friday between 8:30 AM and 5:00 PM Eastern Time.





**For the full line of Mighty Clean tools, replacement parts and
accessories visit
www.ForceToolsUSA.com**

If you have any questions, call our toll- free hotline

1-866-902-9690

www.MightyCleanUSA.com