

Model AP14CR2WG



Key Features

- Portable AC has wheels that make it easy to move from one room to another
- Low Noise Cooling System for a quiet operation
- Multiple functions for personalized comfort (Cooling, Fan, and Dehumidifier modes)
- I-Feel™ Remote Control included so you can operate the AC from across the room



Quiet Operation

Low noise cooling system ensures quiet operation, achieving just 51 dB(A) with the fan set on "Low".



Convenient Dual Display

A second, front-facing temperature display is easy to read, even from across the room.



I-Feel Remote Control

The I-Feel temperature sensor built into the remote control senses its surrounding temperature, and transmits the signal back to the unit, providing maximum comfort.



Warranty

90 day Parts & Labor.

Cool Comfort Offered through Premium Features

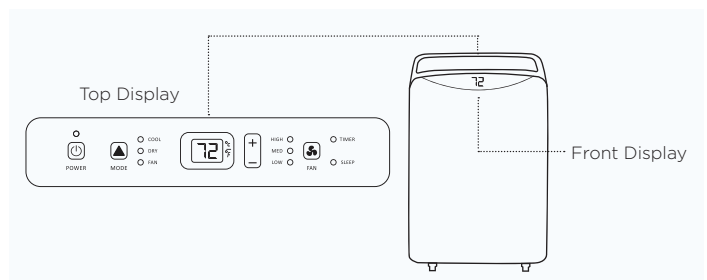
The Hisense Portable Air Conditioner (Model AP14CR2WG) provides the utmost in performance more conveniently than ever. The AC operates quietly due to the low noise cooling system, achieving just 51 dB(A) with the fan set on "Low". In addition, the louvers automatically open to a pre-set position after the unit is powered on. To adjust the automatic louver, press SWING once and then press SWING again to hold the louver at a desired direction. Other convenient features that this AC includes are a second, front-facing temperature display which makes it easier to see the temperature from across the room, multiple modes of operation (Cool, Dehumidify, and Fan) for personalized comfort, and an easy-to-install window kit so you can preserve the external appearance of your home. The window kit is for windows 18" to 50" wide.

TECHNICAL SPECIFICATIONS

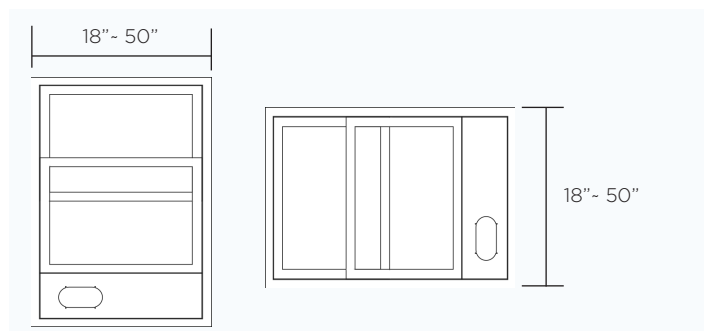
Performance	
Hisense Model	AP14CR2WG
Cooling Capacity (BTU)	14,000 BTU (ASHRAE-128-2001)
Heating Capacity	N/A
Maximum Cooling space	500 sq. ft.
Refrigerant	R-410A
Noise Level in dB(A)	51 - 53 dB(A)
Electrical	
Voltage / Freq / Amps	115V/60Hz / 11.8A
Control Features	
Unit Control Type	Electronic
Fan Control	Button
Thermostat Control	61 - 86 °F
Display Type	Dual LED
Sleep Mode	Yes (on remote)
Dry Mode	Yes
Smart Mode	Yes (on remote)
Cooling Speeds	3 speeds
Temp Display Units	°C / °F
Clock	Yes (on remote)
Timer	24 Hr
Auto Restart	Yes
General Features	
Removable Filter	Yes
Washable PP Filter	Yes
Motorized Air Swing	Yes (on remote)
Vent System	Single Hose, 5.9"D x 59"L
Dehumidification	3.23 Pints / hr
Airflow (CFM)	204 - 278
Accessories	
Remote Control	Yes
AA Batteries	Yes - included
Air Hose	Yes
Window Kit	Yes
Approvals	
Safety	ETL
Energy	CEC
Parcel Shippable	No
Shipping	
Unit Dimension WxDxH (mm)	443x375x750

Carton Dimension WxDXH (mm)	500x425x890
Net Weight /Gross Weight (Kg)	36.9/39.8
Unit Dimension WxDxH (inch)	17.5x14.8x29.5
Carton Dimension WxDXH (inch)	19.6x16.8x35.0
Net Weight /Gross Weight (lbs)	81.3/88.4
Loading(40HQ)	374
Loading (53')	312 (floor loaded)
Warranty/UPC	
Parts & Labor	90 Day
UPC	

Dual Display



Window Size Requirements for the Window Kit



The window installation kit allows you to install the air conditioner in most vertical-sliding windows 18" to 50" wide, or horizontal-sliding windows from 18" to 50" high.

All product, product specifications, and data are subject to change without notice to improve reliability, function, design or otherwise. ©2018 Hisense USA, All rights reserved

Hisense USA Corporation
7310 McGinnis Ferry Road, Suwanee, GA, 30024
1-877-465-3566
www.hisense-usa.com

