

# LightStream™ 4000 lumens XGA Networkable Projector

**ViewSonic®**  
See the difference™ 

**PJD7326**



## Impressive Audiovisual Performance with Smart Design

The ViewSonic networkable LightStream™ PJD7326 XGA projector with a sleek black chassis, features 4,000-lumen, majestic style, intuitive design and impressive audiovisual performance. Exclusive SuperColor™ technology offers a RGBCYW color wheel - 120% brilliant color, for true-to-life image projection, while SonicExpert™ technology powers a 10W cube speaker to deliver incredibly clear and audible sound. PortAll™ - a neatly designed enclosed HDMI/MHL connection compartment, supports wireless HDMI dongles or MHL connectors, while a cable management hood eliminates unsightly cable clutter. With a smart design, the PJD7326 is the ideal projector in any environment with less lighting limitations.

## SuperColor™ Technology: Best in Class Color Accuracy

ViewSonic's proprietary SuperColor™ Technology offers a wider color range than conventional DLP projectors, ensuring that users enjoy realistic and accurate colors. With an exclusive color wheel design and dynamic lamp control capabilities, SuperColor™ Technology projects images with reliable and true-to-life color performance, in both bright and dark environments, without sacrificing image quality.



## Bright Images Less lighting limitations

Packed with 4,000 lumens and a high contrast ratio 22,000:1, the LightStream projector is guaranteed to produce bright images in any environment – even in rooms with high ambient light.



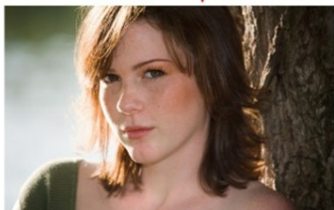
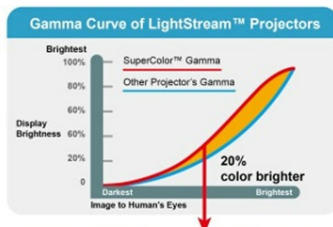
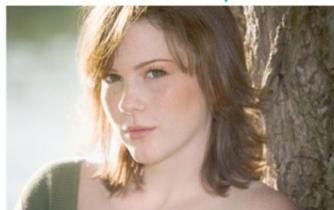
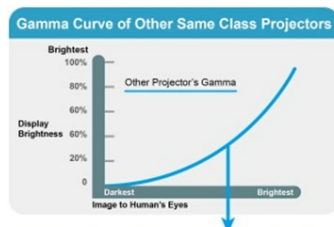
## ViewSonic Exclusive RGBCYW Color Wheel Empowers LightStream™ Projectors

- Up to 120% brilliant color over same class projectors
- Outstanding Red and Yellow over same class DLP projectors
- Amazing color test numbers, seeing is believing !

SuperColor™ 6-Segment Color Wheel RGBCYW actually decreases the white color segment and increases the Cyan and Yellow segments for coating, breaking through the conventional method of color brightness enhancement. It boosts Red and Yellow for vivid colors, and ensures the bright area of the image is clearer.\* Overall, the RGBCYW Color Wheel's color brightness to one's eyes for normal images is enhanced up to 20% compared to other same class projectors. This color enhancement greatly enriches the overall viewing experience, especially when viewing live subjects and natural scenery.

White is the most significant contributor to brightness, however, too much white will wash out colors. Unlike other DLP projectors which increase their white color segment to enhance brightness, ViewSonic utilizes its very own innovative RGBCYW color wheel solution.

\*3LCD/LCD projectors have boasted their pure RGB (red/green/blue) color brightness numbers for lab-oriented absolute red/absolute green/absolute blue images. However, pure RGB objects don't exist in the real world. Emphasizing how pure the RGB results are, is impractical. This testing data can't be applied to real world images. A normal real image mostly contains areas with intermedia color brightness.



## SonicExpert™ Technology

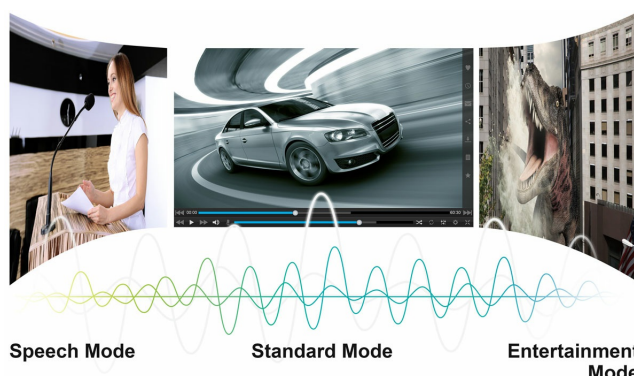
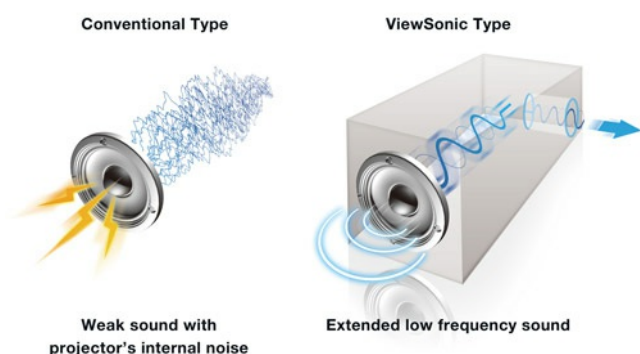
**Clear, comfortable, and louder sound over same-class projectors**

The ViewSonic's proprietary SonicExpert™ technology incorporates a 10W ported speaker chamber and a more powerful amplifier to deliver a full 20Hz – 20Khz sound range. The compact speaker takes pride in quality sound with best-fit Sound Response Curve, and high efficiency of transferring electric power to sound power.

## SonicMode

**Optimized audio performance for Speech, Entertainment, or Standard scenario**

The “Standard” preset offers the best sound levels for general use. The “Speech” preset enhances the sound of spoken words, making it ideal for projecting speeches and lectures, or for sales calls and video conferencing. The “Entertainment” preset is fine-tuned with more bass and richer mid-high frequencies ideal for music and movies.



## Network Manager

**Easy central management system**

All LightStream PJD6/7 projectors come equipped with Crestron RoomView Express, an easy-to-use network management system that lets administrators remotely monitor and control up to 256 LightStream projectors from a single PC.

## PortAll™: Enclosed HDMI/MHL Dongle Compartment

**A clean look**

ViewSonic's exclusive PortAll™ feature—a hidden compartment with an integrated and secure MHL/HDMI port that lets you discretely stream multimedia content from a wireless dongle, or lets you connect to other devices via an HDMI cable. \* Wireless dongle is optional





## Smart Design Easy operation

### Cable Management Hood

The seamless design gives the projector a clean look without wires and I/O ports exposed in the rear.

### Top Lamp Door

An easy-access top lamp door enables simple lamp maintenance and replacement.

### Tactile Keypads

The tactile keypad is raised with concave buttons that assist in making projector set up easier in dark environments.



## Balanced Color and Brightness Best view modes

A choice of 5 unique view settings provide the best possible viewing experience in any environment regardless of ambient light.

**Brightest Mode:** for environments where extra-high brightness is required

**Dynamic Mode:** for presentations under daylight environment and text content

**Standard Mode:** for matching PC or NB color

**ViewMatch Mode:** for general viewing

**Movie Mode:** for watching movies with better saturation in a dark environment



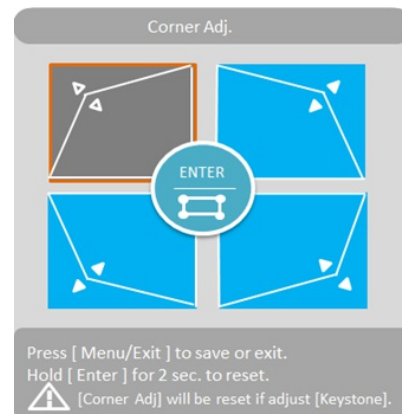
## Dual 3D Blu-ray Ready HDMI Inputs High picture quality, immersive images

Designed with two HDMI ports, this projector is perfect for connecting to any HDMI-enabled device, and can display 3D images directly from 3D Blu-ray players. 3D images can be viewed with optional ViewSonic PGD-350 Shutter Glasses, or any other compatible 3D glasses.



## Flexible Setup for a Quick Startup Horizontal and vertical Keystone correction with 4 corner adjustment

Horizontal and vertical keystone correction and 4 corner adjustment feature eliminate crooked and distorted images for a perfectly proportioned picture every time.



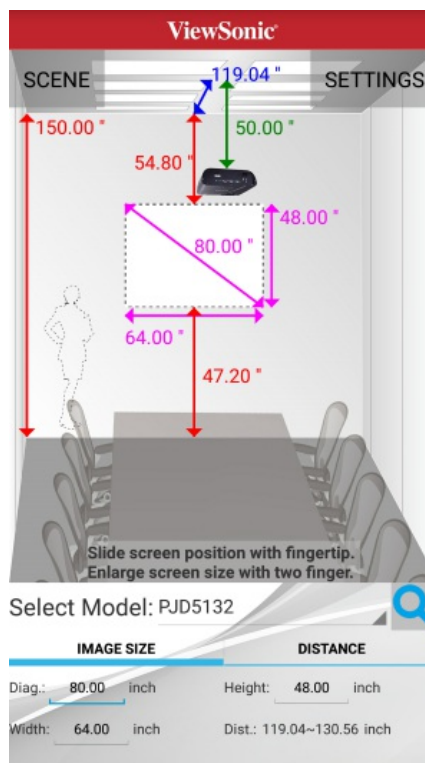
## Programmable Remote Control Easy Control

To satisfy presenter's needs, this remote control contains wireless presenter functions (mouse control, page up-n-down, etc.) and hotkeys for critical, major functions. **“My Button” Setup your favorite hotkey:** Finding a function on a remote control or through the on-screen menu can be time-consuming. The “My Button” button on the remote control is a programmable shortcut button that can be user-programmed to launch a commonly used or desired function.

**App - vRemote App controller with snapshot keystone and lamp life monitor:** Never worry about missing a remote control again. Users can download vRemote, the virtual remote control, onto any IR or WiFi enabled smartphone. vRemote can instantly help users automatically correct keystone with a simple snapshot of the projected image. In addition, administrators can remotely view the projectors' lamp working hours and adjust keystone.

## ProjectorDistance App Quick Projector Position Preview

No matter small meeting room, middle classroom, or big hall, ProjectorDistance tells you how far the projector should be placed according to the room ceiling height, projector's screen size, aspect ratio, etc. Just input several figures, the result will be displayed in the simulation scenarios with measurement. You can use finger to adjust the distance instantly.



## Technical Specifications

### DISPLAY

Resolution	1024x768 (XGA)
F Stop / Focal Length	2.56 ~ 2.68 / 22 ~ 24.1
Zoom Factor	1.1x
Focus / Zoom	Manual / Manual
Keystone	+/- 30° (Horizontal / Vertical)
Display Size	30" ~ 300"
Throw Distance	1.19 m ~ 13.11 m
Throw Ratio	1.96 ~ 2.15
Lamp Power	240 W
Lamp Life (Normal / SuperEco)	4000hrs / 6500hrs

	mode)	
	<b>Brightness</b>	4,000 Lumens
	<b>Contrast Ratio</b>	22,000 :1
	<b>Optical Offset</b>	120 % +/-5%
	<b>Aspect Ratio</b>	4:3
	<b>Color Depth</b>	1.07 Billion Colors (30 bits per color)
<b>AUDIO</b>	<b>Speaker</b>	10W Cube x1
<b>INPUT SIGNAL</b>	<b>Video</b>	480i and 576i, 480p and 576p, 720p, 1080i, 1080p
	<b>Frequency</b>	15 ~ 100 KHz / 24 ~ 120 Hz
<b>COMPATABILITY</b>	<b>PC</b>	Support up to 1920x1080@60Hz
	<b>Mac</b>	Support up to 1920x1080@60Hz
<b>CONNECTOR</b>	<b>VGA Input</b>	x2
	<b>VGA Output</b>	x1
	<b>Digital Input</b>	HDMI (1.4a) x1 / HDMI (MHL2.0) x1
	<b>Composite Input</b>	RCA x1
	<b>S-Video Input</b>	x1
	<b>Component</b>	x2 (Share with VGA input )
	<b>Audio Input</b>	3.5mm mini jack x2
	<b>Audio Output</b>	3.5mm mini jack x1
	<b>Microphone in</b>	Share with Audio in 2 connector
	<b>Control</b>	RS-232
	<b>USB</b>	Mini type B x1 (Maintenance and mouse control)
	<b>Lan</b>	RJ-45
<b>POWER</b>	<b>Voltage</b>	100~240Vac 50/60Hz (Auto Switching)
	<b>Power Consumption</b>	350 W (Max.)
<b>OPERATING CONDITION</b>	<b>Temperature</b>	0°C ~ 40°C (32°F ~ 104°F)
	<b>Humidity</b>	0% ~ 90% (non-condensing)
<b>NOISE LEVEL</b>	<b>Normal / Eco Mode</b>	36dB / 31dB
<b>DIMENSIONS</b>	<b>Physical</b>	316 x 228 x 103.7 mm
<b>WEIGHT</b>	<b>Net</b>	2.5 kgs / 5.51 lbs
<b>REGULATIONS</b>	Mexico Energy test/Registration, , TUV-S Mark(Argentina), India BIS, FCC,CE EMC, CB ,CCC, ROHS, REACH, SVHC, WEEE, ErP, cTUVus, Mexico NOM, KC, PSB, CECP, RCM	
<b>PACKAGE CONTENTS</b>	Power Cord / VGA Cable / Remote Control with Batteries (With Laser pointer) / Quick Start Guide / ViewSonic CD Wizard (With User Manual) / Cable Management	