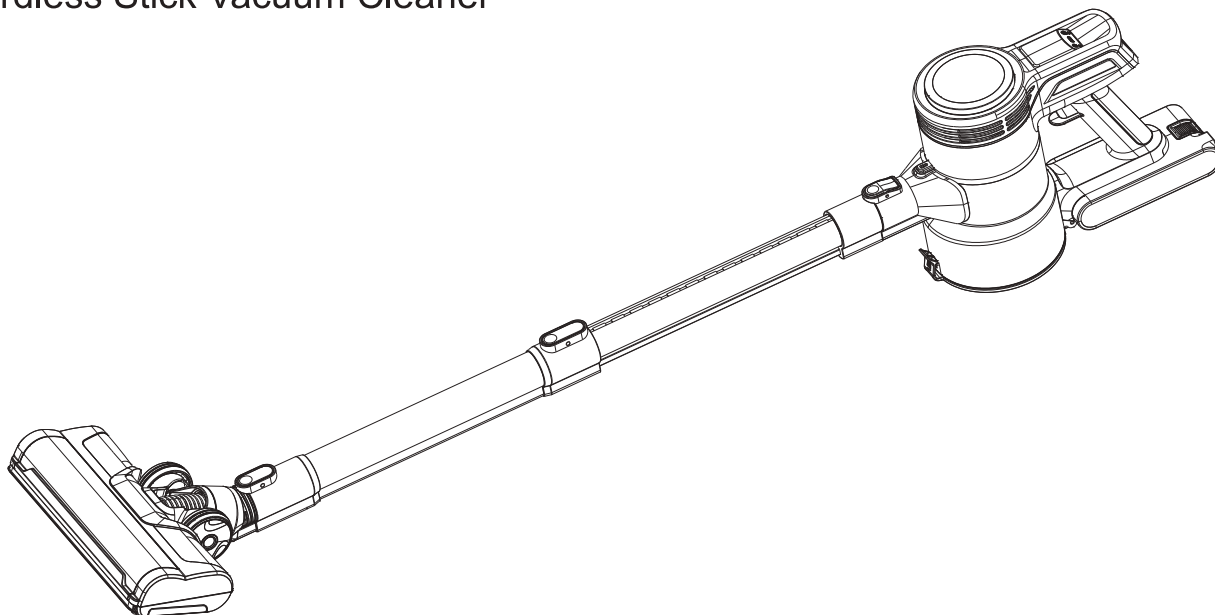


# User Manual

Cordless Stick Vacuum Cleaner





Model No: TKSC-V14


 516-896-6611 Mon-Fri 9AM-5PM(ET)

 [www.engindotools.com](http://www.engindotools.com)

 [www.facebook.com/EnginDotOfficial](https://www.facebook.com/EnginDotOfficial)

 [support@engindotools.com](mailto:support@engindotools.com)

 Shenzhen Houqianding Trading Co., Ltd.

 Room 504D, Block B, Sunshine Hotel, No.2003, Jiabin Road,  
Jianan Community, Nanhu Street, Luohu District, Shenzhen

**Made in China**



# Contents

---

|          |       |
|----------|-------|
| English  | 01~15 |
| Français | 16~30 |
| Español  | 31~45 |

---

# Contents

|                                  |    |
|----------------------------------|----|
| ● Important Safety Instruction   | 01 |
| ● Vacuum Cleaner Parts           | 02 |
| ● Product Introduction           | 03 |
| ● Assembling Your Vacuum Cleaner | 04 |
| ● LED Display Indicator          | 07 |
| ● Cleaning and Care              | 08 |
| ● Troubleshooting                | 14 |
| ● Product Specifications         | 14 |
| ● Maintenance and Warning        | 15 |
| ● Dispose of the Appliance       | 15 |

# Catalogue

|                                     |    |
|-------------------------------------|----|
| ● Consignes de Sécurité Importantes | 16 |
| ● Pièces d'Aspirateur               | 17 |
| ● Présentation du Produit           | 18 |
| ● Assemblage de votre Aspirateur    | 19 |
| ● Indicateur d'Affichage de LED-    | 22 |
| ● Nettoyage et Entretien            | 23 |
| ● Maintenance et Avertissement      | 29 |
| ● Spécifications du Produit         | 29 |
| ● Dépannage                         | 30 |
| ● Éliminer l'Appareil               | 30 |

# Contenidos

|                                       |    |
|---------------------------------------|----|
| ● Instrucción de Seguridad Importante | 31 |
| ● Piezas de la Aspiradora             | 32 |
| ● Introducción del Producto           | 33 |
| ● Montaje de su Aspiradora            | 34 |
| ● LED Indicador de Pantalla           | 37 |
| ● Limpieza y Cuidado                  | 38 |
| ● Mantenimiento y Advertencias        | 44 |
| ● Especificaciones del Producto       | 44 |
| ● Solución de Problemas               | 45 |
| ● Desecho del Aparato                 | 45 |

## Important Safety Instructions

This appliance is for indoor use with domestic purpose only. Use the appliance only on accordance with the instruction in this manual. Any other usage or modification is dangerous. The manufacturer is not liable for damage due to improper use of the appliance.



To reduce the risk of fire, electric shock, or injury

1. This vacuum cleaner is intended for household use. Do not use for any other purpose.
2. This appliance is not intended for use by persons (including children) with reduced physical, sensory or mental capabilities, or lack of experience and knowledge, unless they have been given supervision or instruction concerning use of the appliance in a safe way and understand the hazards involved.  
Children shall not play with appliance. Cleaning and user maintenance shall not be made by children without supervision.
3. Use the original parts or parts recommended by the manufacturer only.
4. Do not use the appliance without filters; otherwise it can get damaged.
5. Do not use outdoors or on wet surfaces.
6. Do not pick up anything that is burning or smoking, such as cigarettes, matches or hot ashes.
7. Keep the vacuum cleaner away from heat sources and avoid direct sunlight.
8. Keep hair, loose clothing, fingers, and all parts of body away from openings and moving parts.
9. Do not block any ventilation openings; otherwise, the motor will be overloaded, the protection device will be triggered, and automatically shut down.
10. Do not vacuum small particles such as cement, gypsum powder, wall powder, etc., otherwise it will cause the vacuum cleaner filter to be blocked and the motor to be damaged.
11. Wipe the vacuum cleaner with a soft cloth to clean it. Do not use wax, thinner, or irritating detergents.
12. This product is a cordless vacuum cleaner. It cannot be used while charging or out of battery.
13. Keep and follow these instructions.

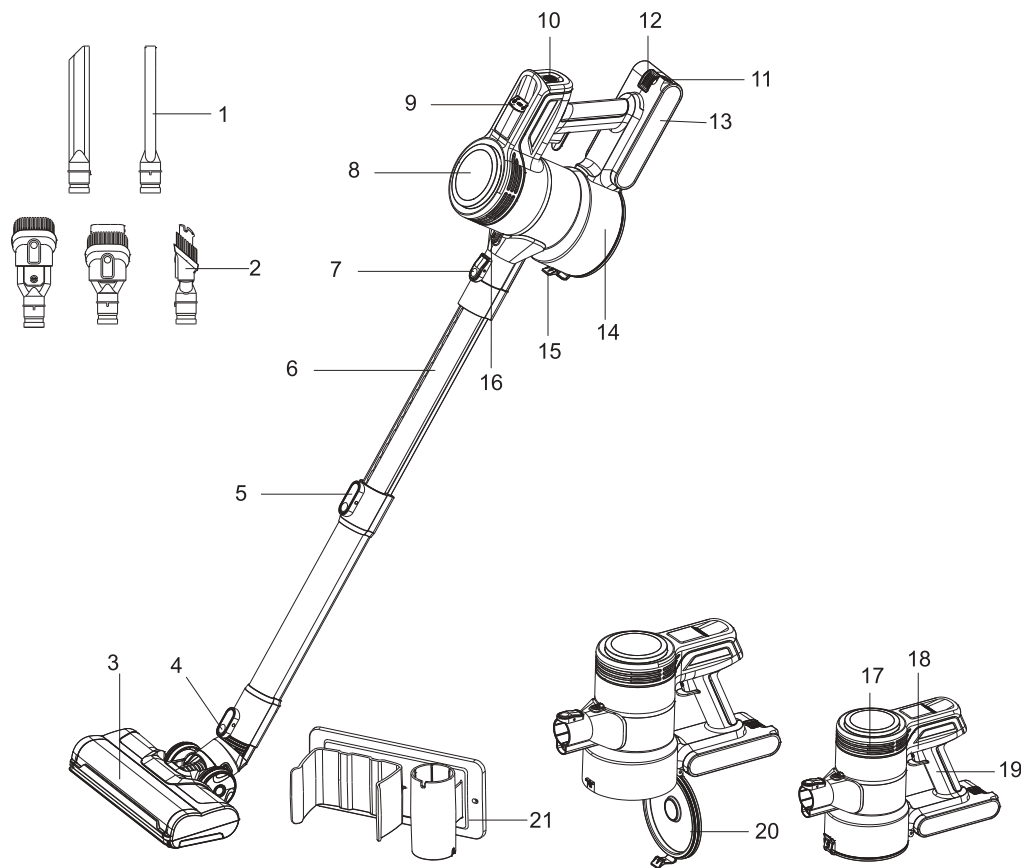
## Vacuum Cleaner Parts

Dear customer, please check if the accessories are complete before using. If there is any issues, please feel free to contact us with email.

| Name                 | Quantity |
|----------------------|----------|
| Main Appliance       | 1        |
| Aluminum Alloy Tube  | 1        |
| Crevice Nozzle       | 1        |
| 2-in-1 Dusting Brush | 1        |
| Floor Brush          | 1        |
| Hanging Dock         | 1        |
| Battery Pack         | 1        |
| User Manual          | 1        |
| Charger              | 1        |
| HEPA Filter          | 2        |



## Product Introduction

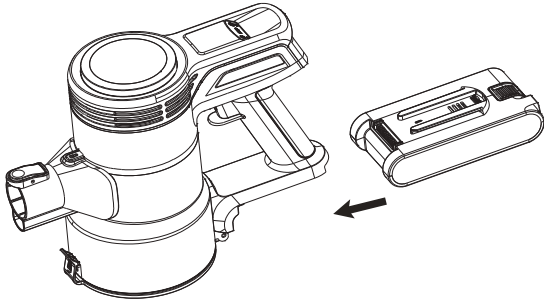


1. Crevice nozzle
2. Dusting brush
3. Floor brush
4. Release button
5. Adjustment button
6. Aluminum wand
7. Release button
8. Vent cover
9. LED Screen
10. Mode switch
11. Charging Port
12. Battery pack button
13. Battery pack
14. Dust cup
15. Dust cup lock
16. Dust cup release button
17. Vent cover
18. ON/OFF Switch
19. Handle
20. Dust cup cover
21. Hanging Dock

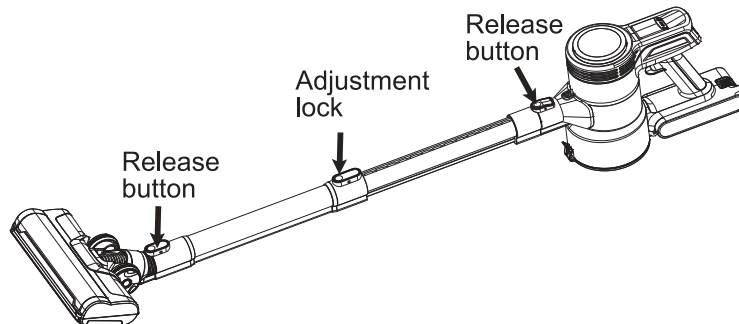
## Assembling Your Vacuum Cleaner

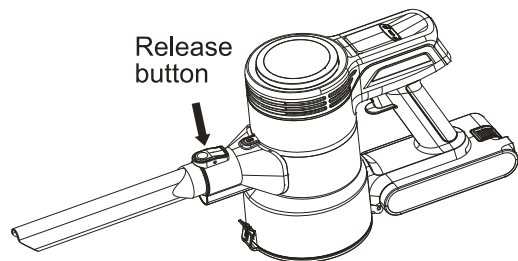
**Caution:** Do not connect the power cord plug to the wall outlet until assembly is completed.

1. **Battery case :** Insert the battery into the battery case until it clicks into place.

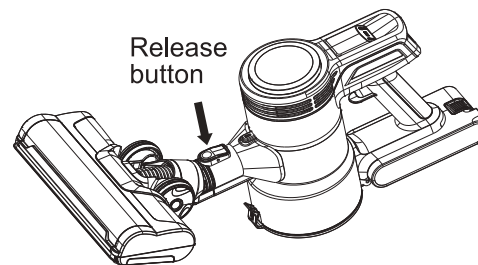


2. **Main body & Floor brush :** Press and hold the release button, then insert the aluminum wand and nozzles separately until you hear a clicking sound, the installation is completed. You can adjust the length of the wand by adjusting the lock button.

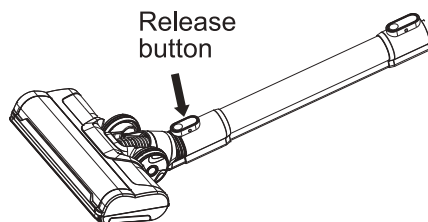




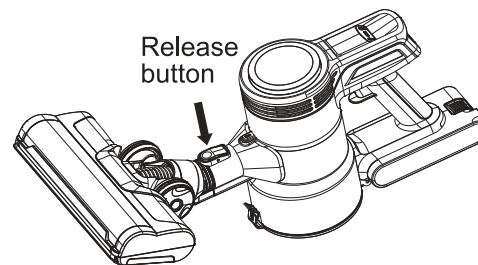
Connect the Crevice nozzle to the vacuum cleaner.



Connect the Floor brush to the main body.

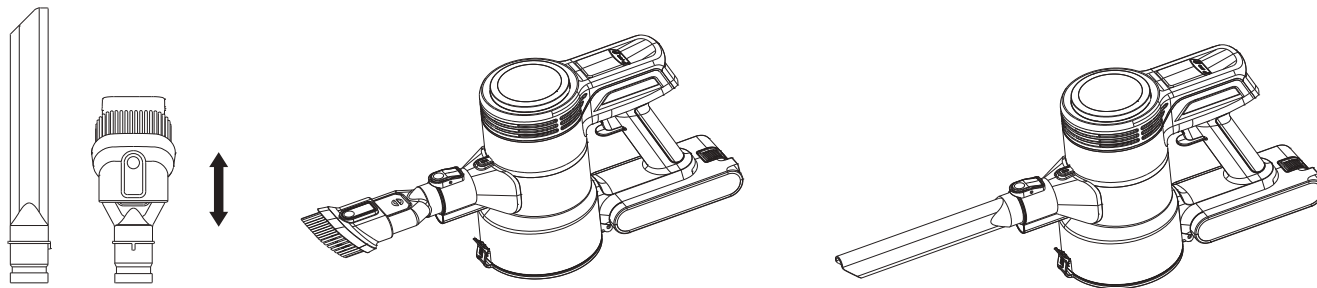


Press the lock to separate the electric floor brush from the wand.



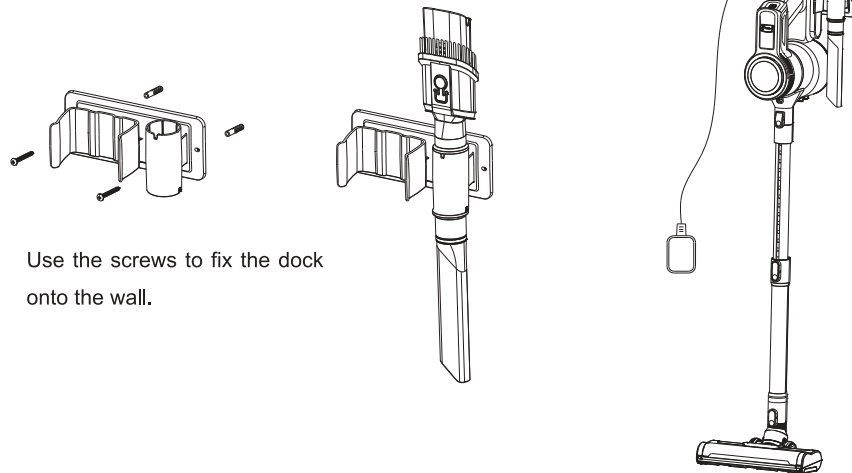
Press the lock to separate the electric floor brush from the main body.

3. Tools can be attached to the vacuum cleaner as needed.



4. Simply drop the appliance to the wall-mounted dock.

**CAUTION:** Please make sure that the battery pack is fixed firmly before hanging onto the wall.



Use the screws to fix the dock onto the wall.

## LED Display Indicator

This product is equipped with an LED display power indicator. The battery is not fully charged at the time of purchase, so please be sure to charge before use (charge for at least 4 hours).

Please note that if the battery power indicator only one LED lit, it means the power is low, please use it after charging.

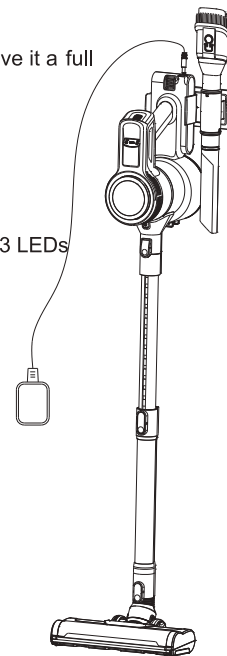
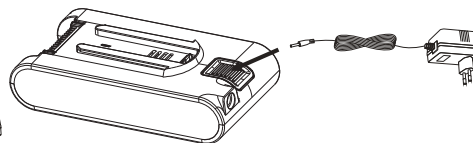
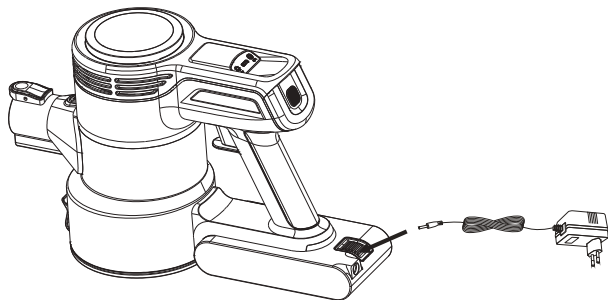
### How to use:

It has two speed working modes. Press the power button once to start working at low speed, press the mode switch to high speed mode; press the power button to turn off the vacuum cleaner.

### Charging:

- 1) If you are using this appliance for the first time or the appliance is to be stored unused for a long period, please give it a full charge before use.
- 2) When the battery is low, please charge it in time to ensure sufficient working time.
- 3) After use, please charge the battery while it is cool. The battery cannot be charged when it is overheated.
- 4) This appliance cannot be used while charging.

**Note:** You can charge the battery on the main body, or unlock from the main body and charge it. While charging, the 3 LEDs on the main body will flash, or the indicator on the battery pack will blink. After fully charged, the 3 LEDs or the indicator on the battery pack will keep constant on.

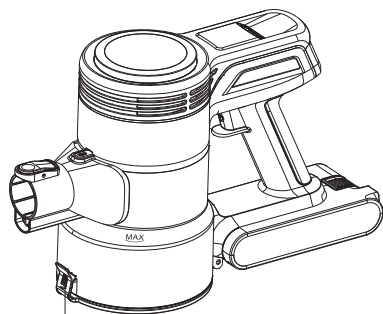


## Cleaning and Care

### 1. How to empty the dust cup

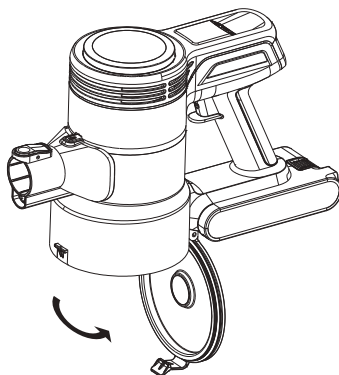
1) Empty the dust cup in the following cases:

- When dust level reached the "MAX" line.
- When suction power has dropped.

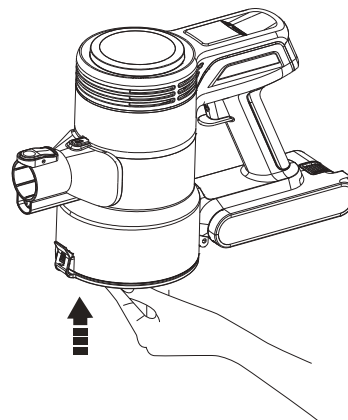


Release  
button

2) Press the release button to open the dust cup cover, and then empty the contents.



3) Reattach the dust cup bottom cover.



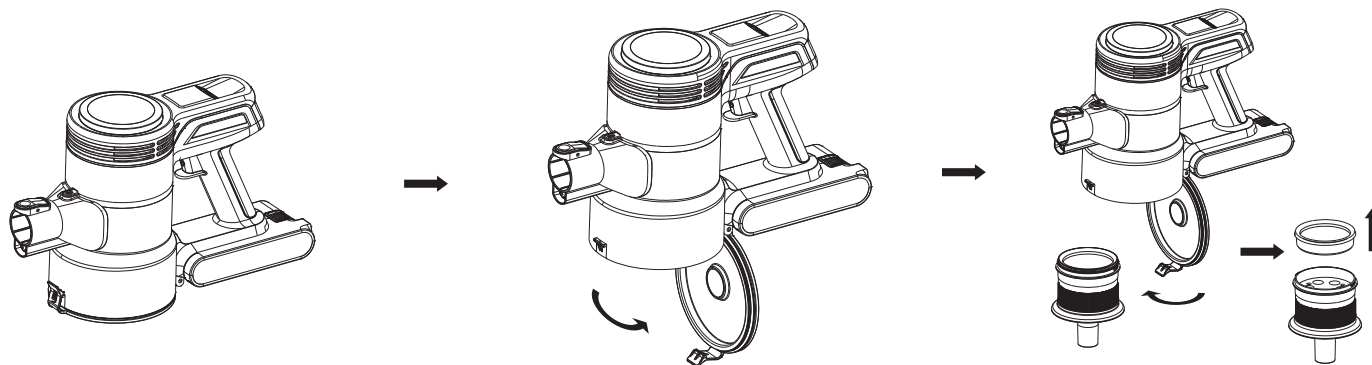
## 2. Cleaning the filter

- 1) Open the dust cup bottom cover, twist anti-clockwise and remove the HEPA filter holder.
- 2) Take out the HEPA from the filter holder, and replace with a clean one.
- 3) Clean the HEPA under cold, running water.
- 4) The HEPA filter should be air dried completely before re-installing.

DO NOT wash in the dishwasher.

DO NOT dry with hair dryer.

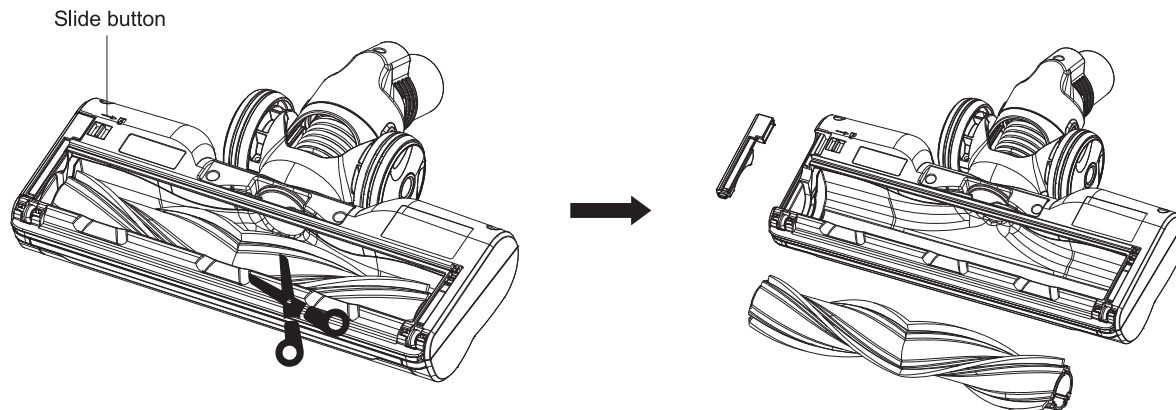
DO NOT assemble when the parts are damp.



### 3. Cleaning the electric floor brush

Cut off any hair, thread, string, carpet pile, and lint entangled around floor brush with a pair of scissors, then

- 1) Push up the slide button located on the bottom of floor brush to the unlock position.
- 2) Remove the latch.
- 3) Remove the brush roller.

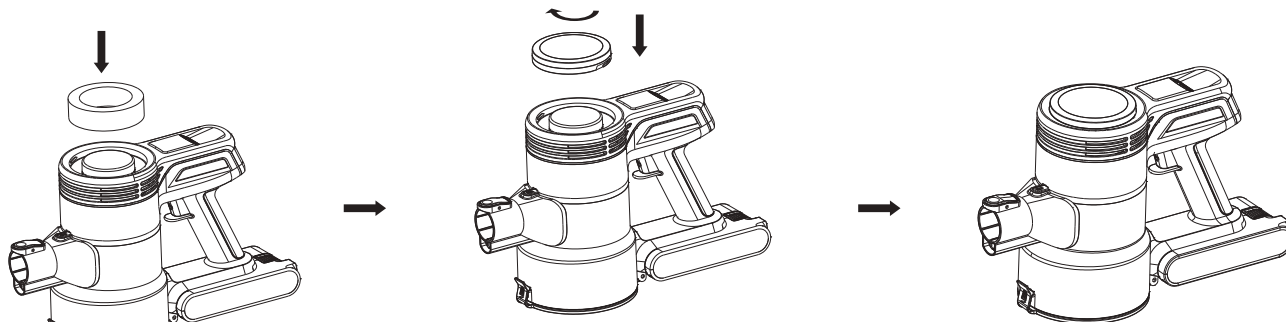




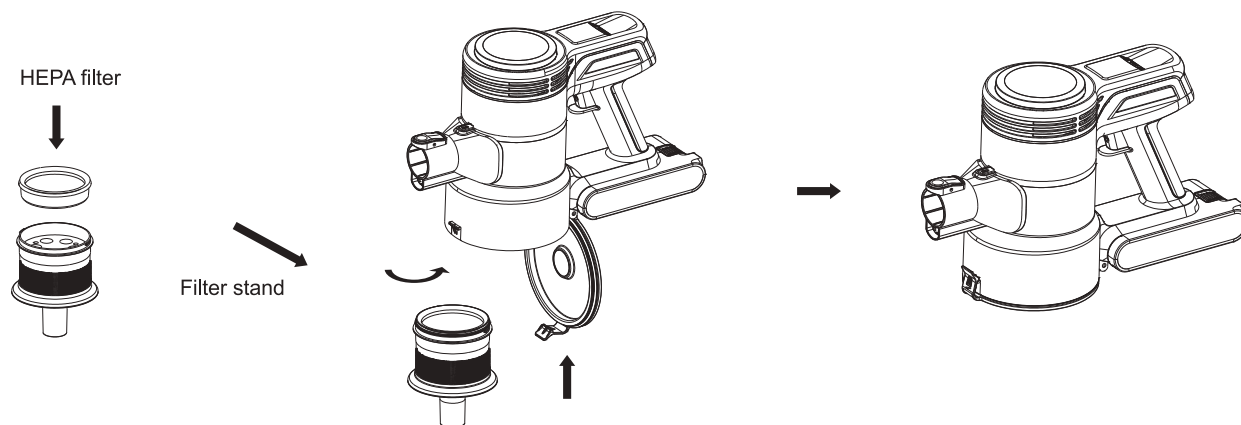
#### 4. Assembly

Assemble the filter in reverse of disassembly.

- 1) Put the sponge filter into the middle cover area.
- 2) Put the top cover on the sponge filter.
- 3) Close the filter cover. Twist clockwise the top cover, ensure it's closed with the main body.

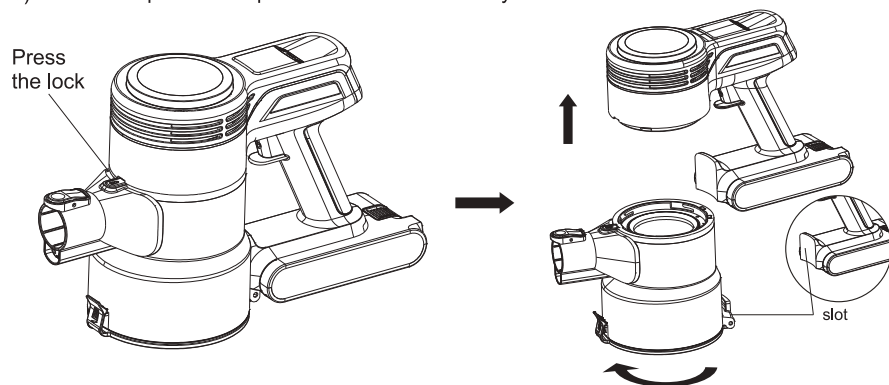


- 4) Put the HEPA filter back into the filtration holder.
- 5) Attach the filtration holder back into the dust cup by twisting in a counterclockwise direction.
- 6) Close the bottom cover.



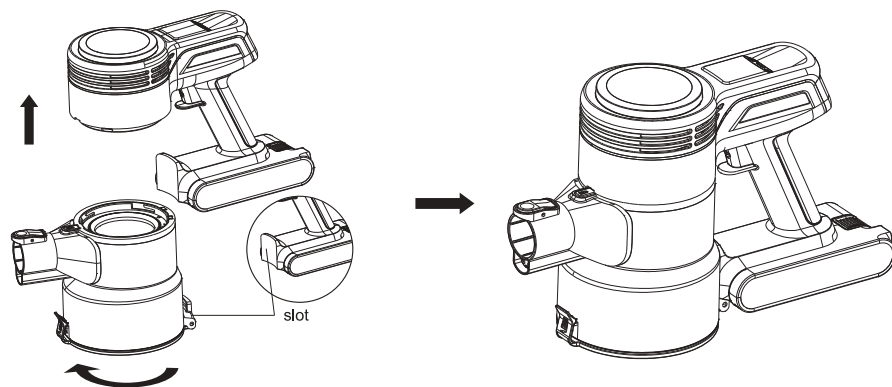
7) Press the dust cup lock, turn it in a clockwise direction.

8) The dust cup can be separated with the main body.



9) Ensure the rib on the dust cup fitted with the slot of main body.

10) Reattach the dust cup until it clicks.



## TROUBLESHOOTING:

|                             |  |
|-----------------------------|--|
| Vacuum is not cleaning well | <ol style="list-style-type: none"> <li>1.Empty the dust bin</li> <li>2.Check that the dust bin is correctly attached</li> <li>3.Check that the filter is correctly attached</li> <li>4.Clean the filter</li> </ol> |
| Vacuum suddenly stops       | <ol style="list-style-type: none"> <li>1.Charge the battery</li> <li>2.Clear debris from the brush bar</li> </ol>  |
| Battery will not charge     | <ol style="list-style-type: none"> <li>1.Check connections</li> <li>2.Clear wall socket</li> </ol>   |
| Floor brush doesn't spin    | <ol style="list-style-type: none"> <li>1.Make sure the dust cup is in the locked position</li> <li>2.Check the electrical inputs in the dirt chamber get stuck or not</li> </ol>                                   |

## TECHNICAL SPECIFICATION:

|                        |                                      |
|------------------------|--------------------------------------|
| Battery                | 22.2v/2200mAh                        |
| Charging               | 4 hours                              |
| Battery charger output | 26.5V / 500mA                        |
| Usage time             | 30min (low speed), 15min(high speed) |
| Power                  | 250W                                 |
| Vacuum                 | 22kPa                                |

## Maintenance and warnings

- The adapter must be removed from the socket-outlet and the battery pack must be removed from the appliance before cleaning or maintaining the appliance.
- To maintain optimum suction power, clean the vacuum cleaner regularly.
- If the filter is damaged, it must be replaced by the manufacturer or its agent.
- Cleaning the dust cup frequently can make the vacuum cleaner maintain optimum suction power and prevent the vacuum cleaner from overheating and loss.
- The filter in the dust cup can be rotated and removed for cleaning. If the HEPA filter is not very dirty, just tap the filter to let the dust fall off.
- Do not clean the filter with a washing machine or dishwasher, and do not use a hair dryer to dry the filter.
- When the dust cup or filter is not dried after cleaning, do not insert it into the vacuum cleaner, because the wet dust cup or filter can easily damage the vacuum cleaner.

## Disposal of the appliance



Do not throw this product in household garbage. Be sure to take it to your local waste collection point or retailer. The classification and disposal of electrical or electronic product waste is beneficial to the protection of the environment and human health. The recycling and recycling of its components can greatly save energy and reduce raw material consumption.